

# Characterizing SARS-CoV-2 mutations in the United States

Rui Wang<sup>1</sup>, Jiahui Chen<sup>1</sup>, Kaifu Gao<sup>1</sup>, Yuta Hozumi<sup>1</sup>, Changchuan Yin<sup>2</sup>, and Guo-Wei Wei<sup>1,3,4\*</sup>

<sup>1</sup> Department of Mathematics,

Michigan State University, MI 48824, USA.

<sup>2</sup> Department of Mathematics, Statistics, and Computer Science,

University of Illinois at Chicago, Chicago, IL 60607, USA

<sup>3</sup> Department of Electrical and Computer Engineering,

Michigan State University, MI 48824, USA.

<sup>4</sup> Department of Biochemistry and Molecular Biology,

Michigan State University, MI 48824, USA.

July 24, 2020

## Abstract

The severe acute respiratory syndrome coronavirus 2 (SARS-CoV-2) has been mutating since it was first sequenced in early January 2020. The genetic variants have developed into a few distinct clusters with different properties. Since the United States (US) has the highest number of viral infected patients globally, it is essential to understand the US SARS-CoV-2. Using genotyping, sequence-alignment, time-evolution,  $k$ -means clustering, protein-folding stability, algebraic topology, and network theory, we reveal that the US SARS-CoV-2 has four substrains and five top US SARS-CoV-2 mutations were first detected in China (2 cases), Singapore (2 cases), and the United Kingdom (1 case). The next three top US SARS-CoV-2 mutations were first detected in the US. These eight top mutations belong to two disconnected groups. The first group consisting of 5 concurrent mutations is prevailing, while the other group with three concurrent mutations gradually fades out. Our analysis suggests that female immune systems are more active than those of males in responding to SARS-CoV-2 infections. We identify that one of the top mutations, 27964C>T(S24L) on ORF8, has an unusually strong gender dependence. Based on the analysis of all mutations on the spike protein, we further uncover that three of four US SARS-CoV-2 substrains become more infectious. Our study calls for effective viral control and containing strategies in the US.

Key words: COVID-19, SARS-CoV-2, spike protein, ORF8a, genotyping, persistent homology, network theory, machine learning

## Contents

<b>1</b>	<b>Introduction</b>	<b>1</b>
<b>2</b>	<b>Results and Discussion</b>	<b>2</b>
2.1	Genotyping analysis . . . . .	2
2.1.1	Cluster analysis . . . . .	2

---

\*Corresponding author. E-mail: weig@msu.edu

2.1.2	Top mutations in the United States . . . . .	3
2.1.3	Co-mutation analysis . . . . .	4
2.1.4	Evolutionary analysis . . . . .	5
2.1.5	Gender analysis . . . . .	6
2.2	Protein-specific analysis . . . . .	6
2.2.1	Mutation on the NSP12 protein . . . . .	6
2.2.2	Mutation on the Spike protein . . . . .	7
2.2.3	Mutation on the ORF3a protein . . . . .	9
2.2.4	Mutation on the NSP2 protein . . . . .	12
2.2.5	Mutations on the NSP13 protein . . . . .	13
2.2.6	Mutations on the ORF8 protein . . . . .	15
2.3	Infectivity analysis . . . . .	17
2.3.1	Cluster A infectivity . . . . .	19
2.3.2	Cluster B infectivity . . . . .	19
2.3.3	Cluster C infectivity . . . . .	20
2.3.4	Cluster D infectivity . . . . .	21
<b>3</b>	<b>Methods</b>	<b>21</b>
3.1	Data collection and pre-processing . . . . .	21
3.2	Single nucleotide polymorphism genotyping . . . . .	22
3.3	Distance of SNP variants . . . . .	22
3.4	<i>K</i> -means clustering . . . . .	23
3.5	Topology-based machine learning prediction of protein-protein binding affinity changes following mutations . . . . .	24
3.6	Topology-based machine learning prediction of protein folding stability changes following mutation . . . . .	24
3.7	Graph network models . . . . .	24
<b>4</b>	<b>Conclusion</b>	<b>25</b>

# 1 Introduction

The severe acute respiratory syndrome coronavirus 2 (SARS-CoV-2), a strain of  $\beta$ -coronavirus that causes the respiratory illness, is responsible for the ongoing global pandemic of coronavirus disease 2019 (COVID-19). At this stage, more than 200 countries, regions, and territories have reported positive COVID-19 infections. Among them, the United States (US) has over 4 million confirmed cases and 145 thousand deceased cases as of July 22, 2020 [1]. The rapid spread of COVID-19 gives rise to a question of whether SARS-CoV-2 has become more transmissible or infectious in the US. Benefiting from the vast collection of complete genome sequencing data of SARS-CoV-2 deposited in GISAID, studies on the mutation dynamics provide us a way to investigate the characteristics of US SARS-CoV-2 strains and understand their ramifications in the US population health and economy.

SARS-CoV-2 belongs to the Coronaviridae family and the Nidovirales order, which has been shown to have a genetic proofreading mechanism in its replication achieved by an enzyme called non-structure protein 14 (NSP14) in synergy with NSP12, i.e., RNA-dependent RNA polymerase (RdRp) [2, 3]. Therefore, SARS-CoV-2 has a higher fidelity in its transcription and replication process than that of other single-stranded RNA viruses, such as flu virus and HIV. Nonetheless, 4968 single mutations have been gradually detected in the 7823 US strains in the past few months compared with the first SARS-CoV-2 genome collected on December 24, 2019 [4, 5]. The frequency of virus mutations is accumulated by the natural selection, cellular environment, polymerase fidelity, random genetic drift, features of recent epidemiology, host immune responses, gene editing, replication mechanism, etc [6, 7]. However, it is difficult to determine the detailed mechanism of a specific mutation. Additionally, the current mechanistic understanding of SARS-CoV-2 proteins, protein-protein interactions, and their synergy with host cell proteins, enzymes, and signaling pathways is very limited. There is an urgent need to further explore the SARS-CoV-2 structure, function, and activity. Analyzing SARS-CoV-2 genome mutations and evolution provides an efficient means to understand viral genotyping and phenotyping. Although experimental verification is required to ultimately determine how single mutations with high frequency have changed SARS-CoV-2 properties, such as viral infectivity and virulence, the relationship between these single high-frequency mutations and SARS-CoV-2 properties can still be deciphered from genotyping, protein analysis, and transmission tracking.

In this work, we extract 7823 single nucleotide polymorphism (SNP) profiles from genome isolates collected in the United States. We found that the US SARS-CoV-2 has developed into four substrains. To further understand the characteristic of the US SARS-CoV-2 evolution and transmission, we investigate its most prevalent high-frequency or top mutations. Based on genotyping results, top eight missense mutations (i.e., 14408C>T-(P323L), 23403A>G-(D614G), 25563G>T-(Q57H), 1059C>T-(T85I), 28144T>C-(L84S), 17858A>G-(Y541C), 17747C>T-(P504L), and 27964C>T-(S24L)) are identified, in addition to three synonymous mutations (i.e., 3037C>T-(F106F), 8782C>T-(S76S), and 18060C>T-(L7L)) that do not change SARS-CoV-2 proteins. Among them, mutations 17858A>G-(Y541C), 17747C>T-(P504L), and 27964C>T-(S24L) were originated and prevalent mainly in the US, attributing to the unique characteristics of COVID-19 in the US. We focus on the top eight missense mutations in the present work. Based on co-mutation and time evolution analysis, we hypothesize that three concurrent mutations 17747C>T-(P504L), 17858A>G-(Y541C), and 28144T>C tend to fade out, while the other five concurrent mutations can enhance the infectivity of SARS-CoV-2. Moreover, by analyzing the gender disparity, we find that a US-unique mutation, 27964C>T-(S24L), shows an interesting female-dominated pattern.

NSP2, NSP12 (RdRp), NSP13 (helicase), spike (S) protein, ORF3a, and ORF8 are six SARS-CoV-2 proteins that associate with eight different missense mutations mentioned above. It is important to analyze the impact of mutations on the structures, stabilities, and functions of these proteins. Employing the Jacard distance-based genotyping [8, 9], topological data analysis [10], artificial intelligence [11], flexibility-

rigidity index (FRI) [12], and network models [13], we show that 23403A>G-(D614G) and 27964C>T-(S24L) strengthen the folding stability of the spike protein and ORF8 protein. Conversely, the other high-frequency missense mutations disrupt the folding stability of its corresponding proteins. Furthermore, because SARS-CoV-2 enters the host cells by the interaction of the S protein and the host angiotensin-converting enzyme 2 (ACE2) receptor [14], we quantitatively evaluate the mutation-induced protein-protein binding free energy changes ( $\Delta\Delta G$ ) of S protein and ACE2. The results reveal that overall, the frequency of infectivity-strengthening mutations on the S protein is higher than the infectivity-weakening mutations, explaining the fast person-to-person transmission in the United States.

In a nutshell, we analyze the characteristics of SARS-CoV-2 substrains and prevalent mutations in the United States. These mutations, together with additional mutations on the S protein, suggest that SARS-CoV-2 has become more infectious in the United States.

## 2 Results and Discussion

### 2.1 Genotyping analysis

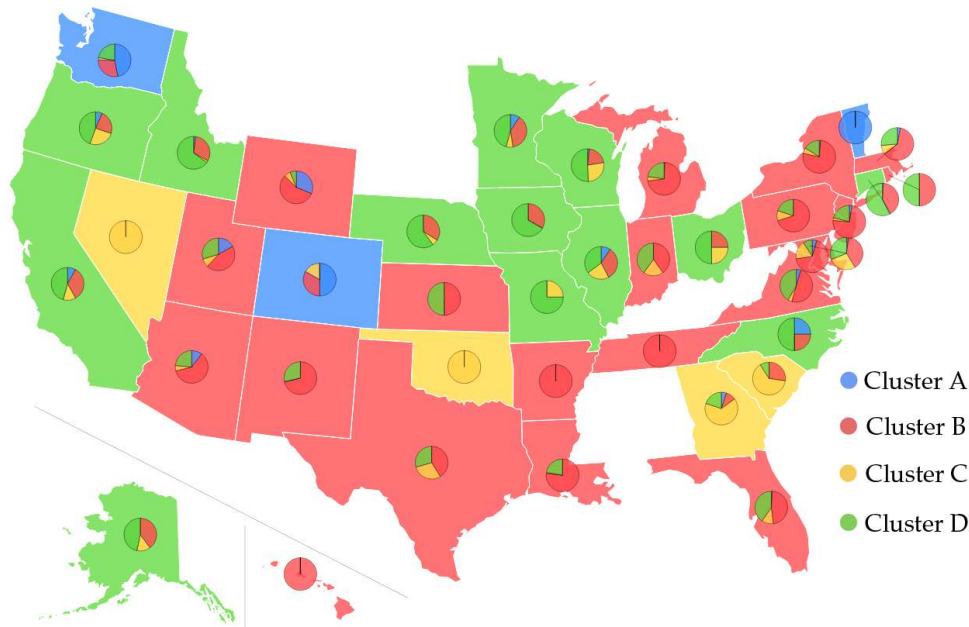


Figure 1: Pie chart plot of four clusters in the United States as of July 14, 2020. The blue, red, yellow, and green colors represent clusters A, B, C, and D, respectively. The base color of each state is decided by its dominant cluster. Some of the states do not submit the complete genome sequences to GISAID. Therefore, we will not set the base color of these states.

#### 2.1.1 Cluster analysis

Complete genome sequence data can provide us with a wide variety of opportunities to decode the mutation-induced transmission and infection behavior of COVID-19. In this work, we downloaded 28726 complete SARS-CoV-2 genome sequences from GISAID (<https://www.gisaid.org/>) up to July 14, 2020. Based on the genotyping results, we obtain 28726 SNP profiles, which record all of the single mutations compared to the first complete genome sequence of SARS-CoV-2 in the GenBank (access number: NC\_045512.2). Among them, 7823 SNP profiles are decoded from the genome isolates submitted by the United States, and 4968



single mutations are detected. We track the geographical distributions of the 4968 single mutations in 7832 SARS-CoV-2 genome isolates with the  $k$ -means clustering method. Based on the mutations, the 7832 genome isolates in the United States are clustered into four distinct clusters, as shown in Figure 1. The blue, red, yellow, and green represent Cluster A, B, C, and D, respectively. The base color of each state is determined by its dominated cluster. We show that most of the states are dominated by Cluster B and Cluster D. Table 1 lists the distribution of samples and the total number of single mutations in 20 US states that have submitted significantly many SARS-CoV-2 genome isolates. They are Alaska (AK), Arizona (AZ), California (CA), Connecticut (CT), Washington, D.C. (DC), Florida (FL), Idaho (ID), Illinois (IL), Louisiana (LA), Maryland (MD), Massachusetts (MA), Michigan (MI), Minnesota (MN), New Mexico (NM), New York (NY), Oregon (OR), Utah (UT), Virginia (VA), Washington (WA), and Wisconsin (WI). In Cluster A, B, C, and D, the co-mutations with the highest number of descendants are [8782C>T, 18060C>T, 28144T>C], [241C>T, 3037C>T, 14408C>T, 23403A>G], [11083G>T], and [3037C>T, 14408C>T], respectively. It is noted that all of the 20 states have the mutations from Clusters B and D. Alaska (AK) and Louisiana (LA) do not have mutations from Cluster A, and New Mexico (NM) does not have mutations in Clusters A and C. The complete list of the table can be found in the supporting materials. More analysis related to the infectivity of SARS-CoV-2 based on our four distinct clusters is given in Section 2.3.

Table 1: The cluster distributions of samples ( $N_{NS}$ ) and total mutation counts ( $N_{TF}$ ) in 20 states of the U.S. The 20 states are Alaska (AK), Arizona (AZ), California (CA), Connecticut (CT), Washington, D.C. (DC), Florida (FL), Idaho (ID), Illinois (IL), Louisiana (LA), Maryland (MD), Massachusetts (MA), Michigan (MI), Minnesota (MN), New Mexico (NM), New York (NY), Oregon (OR), Utah (UT), Virginia (VA), Washington (WA), and Wisconsin (WI).

	Cluster A		Cluster B		Cluster C		Cluster D	
State	$N_{NS}$	$N_{TF}$	$N_{NS}$	$N_{TF}$	$N_{NS}$	$N_{TF}$	$N_{NS}$	$N_{TF}$
AK	0	0	12	99	4	27	14	105
AZ	8	51	46	364	4	44	18	156
CA	99	752	414	3308	152	830	561	5999
CT	1	11	44	365	1	12	62	701
DC	1	6	15	108	4	51	2	34
FL	2	12	85	672	21	275	73	810
ID	1	10	16	147	1	9	33	460
IL	8	57	28	202	19	184	30	265
LA	0	0	264	2302	3	80	77	961
MD	1	6	23	178	16	221	18	257
MA	1	8	21	138	3	21	9	64
MI	2	13	192	1486	11	111	61	572
MN	43	311	177	1398	31	236	212	2537
NM	0	0	15	98	0	0	6	52
NY	17	108	977	7338	70	560	204	1918
OR	13	84	46	395	50	269	87	762
UT	12	76	32	243	6	50	21	161
VA	15	100	163	1291	13	108	136	1430
WA	982	7274	598	4799	49	558	465	5316
WI	11	74	137	1019	178	973	334	3539

### 2.1.2 Top mutations in the United States

To investigate the implications of mutations on the transmission, infection, and virulence of SARS-CoV-2 in the United States, we focus on the high-frequency or top mutations that represent the most common characteristics of SARS-CoV-2 in the United States. A total of 11 mutations in the United States has a frequency greater than 700. Among them, 3 mutations are synonymous ones (i.e., 3037C>T-(F106F), 8782C>T-(S76S),

Table 2: Top 8 missense mutations that are prevalent in the United States. The ranking of these 8 mutations in the US and world are included in the table.  $NC_{U.S.}$  and  $NC_{World}$  represent for the total number of sequences with a specific mutation in the United States and in the world, respectively. The last column records the date that these eight missense mutations were detected for the first time in the world and in the United States. The second-last column records their corresponding countries, i.e. the country lists at the top shows where the mutations first detected, and the country lists at the bottom will always be the United States. Here, UK, US, CN, SG represent the United Kingdom, the United States, China, and Singapore, respectively. We use ISO 8601 format YYYY-MM-DD as the date format.

Rank: US/World	Mutation	Protein	$NC_{U.S.}$	$NC_{World}$	Country	Date
Top 1/Top 2	14408C>T-(P323L)	NSP12(RdRp)	5918	22081	UK US	2020-02-03 2020-02-28
Top 2/Top 1	23403A>G-(D614G)	Spike	5912	22162	CN US	2020-01-24 2020-02-28
Top 3/Top 3	25563G>T-(Q57H)	ORF3a	4827	8326	SG US	2020-02-16 2020-02-29
Top 4/Top 7	1059C>T-(T85I)	NSP2	4237	6595	SG US	2020-02-16 2020-02-29
Top 5/Top 8	28144T>C-(L84S)	ORF8	1434	2487	CN US	2020-01-05 2020-01-19
Top 6/Top 10	17858A>G-(Y541C)	NSP13(Helicase)	1245	1428	US US	2020-02-20 2020-02-20
Top 7/Top 11	17747C>T-(P504L)	NSP13(Helicase)	1224	1396	US US	2020-02-20 2020-02-20
Top 8/Top 14	27964C>T-(S24L)	ORF8	705	749	US US	2020-02-20 2020-02-20

and 18060C>T-(L7L)) and 8 mutations are the missense mutations (i.e., 14408C>T-(P323L), 23403A>G-(D614G), 25563G>T-(Q57H), 1059C>T-(T85I), 28144T>C-(L84S), 17858A>G-(Y541C), 17747C>T-(P504L), and 27964C>T-(S24L)). Since synonymous mutations do not change SARS-CoV-2 proteins, we only focus on the other eight missense mutations. Table 2 lists the frequencies of the top 8 missense mutations in the United States. The dates that these mutations were first detected in the world and in the United States are also included in the Table 2. The first missense mutation, 23403A>G-(D614G), occurred in China on January 24, 2020. The missense mutation with the highest frequency, 14408C>T-(P323L), occurred in the United Kingdom on February 3, 2020. Both mutations were first detected in the US on February 28, 2020. The first top mutation recorded in the US was 28144T>C-(L84S), on January 19. This mutation was originally detected in China on January 5, 2020.

Note that three of the top 8 missense mutations, i.e., 17858A>G-(Y541C), 17747C>T-(P504L), and 27964C>T-(S24L), first appeared in the United States. In fact, over 87% of these mutations are kept in the United States.

Note that the top 5 mutations in the United States are also the top 5 mutations in the world. However, the next 3 mutations in the US is not ranked within the top 8 globally.

### 2.1.3 Co-mutation analysis

The statistical values of pairwise co-mutations from the top 8 high-frequency mutations in Table 3. The upper triangular reveals the total number of co-mutations for each pair of mutations, the diagonal presents the frequency of every single mutation, and the lower triangular shows the ratios of pairwise co-mutations over single mutations. It is easy to see that the top 8 mutations can be grouped into two essentially disconnected groups. The first group involves 5 mutations 1059C>T-(T85I), 14408C>T-(P323L), 23403A>G-(D614G), 25563G>T-(Q57H), and 27964C>T-(S24L) that are strongly correlated, though have a wide range of frequencies. The other three mutations, 17747C>T-(P504L), 17858A>G-(Y541C), and 28144T>C-(L84S),

Table 3: The statistical values of pairwise co-mutations from the top 8 high-frequency mutations. The values in the diagonal reveal the total number of a specific single mutation in the United States, the values in the upper triangular represent the total number of the co-mutations, and the values in the lower triangular present the ratios of pairwise co-mutations over single mutations.

	14408C>T	23403A>G	1059C>T	25563G>T	27964C>T	17747C>T	17858A>G	28144T>C
14408C>T	5918	5904	4235	4818	705	0	0	4
23403A>G	1.00/1.00	5912	4230	4818	705	0	0	3
1059C>T	1.00/0.72	1.00/0.72	4237	4235	703	0	0	4
25563G>T	1.00/0.82	1.00/0.82	1.00/0.88	4827	703	1	1	4
27964C>T	1.00/0.12	1.00/0.12	1.00/0.17	1.00/0.15	705	0	0	0
17747C>T	0/0	0/0	0/0	0/0	0/0	1224	1224	1222
17858A>G	0/0	0/0	0/0	0/0	0/0	1.00/1.00	1245	1243
28144T>C	0/0	0/0	0/0	0/0	0/0	0.85/1.00	0.87/1.00	1434

occur mostly together and have similar numbers of frequencies.

## 2.1.4 Evolutionary analysis

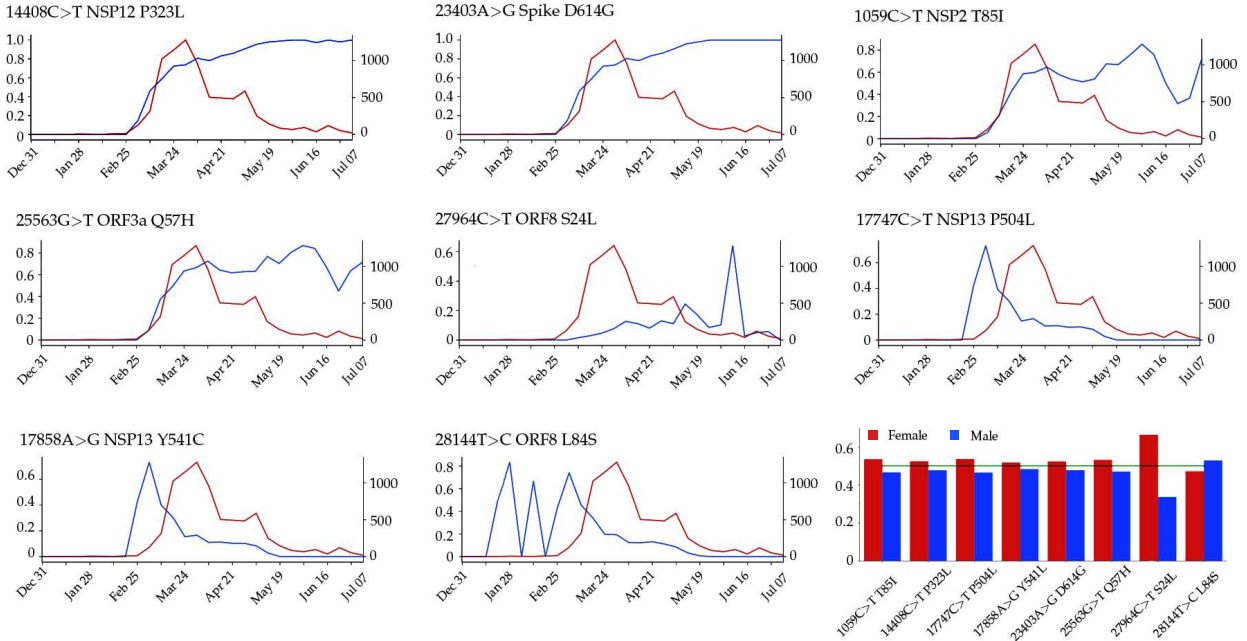


Figure 2: The blue line plots illustrate the evolution of the top 8 missense mutation ratios computed as the frequency of genome sequences having mutations over the counts of genome sequences at each 10-days period. The red lines represent the evolution of the total counts of genome sequences. Bar plot of the gender distributions of the ratio of the number of samples having top 8 missense mutations over the total number of samples having age and/or gender labels. Red bars represent the female ratio and the blue bars represent the male ratio in the United States.

Figure 2 plots time evolution trajectories of top 8 missense mutations. The red curves are the total numbers of genome samples over time, which become very insufficient after middle May 2020. First, as shown in Table 3, mutations 14408C>T-(P323L) and 23403A>G-(D614G) appear concurrently and thus have an identical trajectory as shown in Figure 2. Note that this pair of mutations exist in essentially all of the US infections. Additionally, mutation 1059C>T-(T85I) always occurs together with mutation 25563G>T-(Q57H). Therefore, its time evolution trajectory is extremely similar to that of 25563G>T-(Q57H). Both mutations were first detected in Singapore on February 16, 2020. This pair of mutations occur in

about 70% of US COVID-19 cases. The third pair of mutations, 17747C>T-(P504L) and 17858A>G-(Y541C), first detected and occurred mostly in the US, have an identical evolution trajectory. Suggested by genome samples, this pair of US-based mutations on the helicase protein appears to have essentially died out in the US. Unfortunately, because there are very insufficient sequencing in the US now as shown by the red curve in Figure 2, one can not rule out the existence of these mutations. Mutation 28144T>C-(L84S), the first known mutation globally, has had a very unsteady trajectory. However, its trajectory became identical to those of its co-mutations 17747C>T-(P504L) and 17858A>G-(Y541C) after February 20, 2020. Finally, mutation 27964C>T-(S24L) has an usually behavior. Its peak ratios occurred in early June when there were insufficient sequence samples in the US.

### 2.1.5 Gender analysis

The last chart in Figure 2 displays the gender disparity of the top 8 mutations in the US. The overall pattern may correlate with the disparity in male and female immune response and gene editing strengths. In the US, the total number of mutations in all 1044 female genome samples is 8438 compared with 7779 mutations recorded in 982 male samples. After the total number correction, female genome isolates still have about 2% more mutations than those of male genome isolates. There is an apparent gender difference in mutation 27964C>T-(S24L) on the ORF8 protein. Among 705 samples having this mutation, 204 isolates have gender labels. The ratio of female samples (167) over male samples (67) is about 2 to 1. We currently do not have a good explanation for such a large difference in the ratio.

## 2.2 Protein-specific analysis

In this section, we discuss the properties of the top 8 missense mutations associated with 6 proteins (i.e., NSP2, NSP12, NSP13, spike protein, ORF3a, and ORF8). Based on the analysis presented above, we reveal the potential influence of these high-frequency mutations on the infective capacity of SARS-CoV-2 in the United States using protein folding stability analysis. Furthermore, to understand the impact on the protein's structures induced by mutations, we employ artificial intelligence [11], flexibility-rigidity index (FRI) [12], and subgraph centrality models [13]. Results of our theoretical analysis are summarized in Table 4, which lists the folding stability changes, the FRI rigidity changes, and the average subgraph centrality changes following the mutations. Here, the folding stability change following mutation  $\Delta\Delta G = \Delta G_w - \Delta G_m$  measures the difference between the folding free energies of the wild type  $\Delta G_w$  and the mutant type  $\Delta G_m$ . More specifically, a positive folding stability change  $\Delta\Delta G$  indicates that the mutation will stabilize the structure of the protein and vice versa. The molecular FRI rigidity  $R_\eta$  measures the topological connectivity and the geometric compactness of the network consisting of  $C_\alpha$  at each residue and the heavy atoms involved in the mutant. In this work,  $\eta$  determines the range of pairwise interactions and is set to 8Å. Furthermore, the average subgraph centrality  $\langle C_s \rangle$  is employed to describe the connection between any pair of atoms within a cutoff distance of 8.0 Å. The decrease of the average participating rate of each edge in the network will cause the increment of the average subgraph centrality  $\langle C_s \rangle$ . The increment of the  $\langle C_s \rangle$  induced by a mutation is due to the decrease of the number of neighbor edges participating rate of each edge [13]. In addition, we also list the statistical values of pairwise co-mutations for the top 8 high-frequency mutations in Table 3.

### 2.2.1 Mutation on the NSP12 protein

Mutation 14408C>T-(P323L) on the NSP12 (also called RNA-dependent RNA polymerase, abbreviation RdRp) was first found in the United Kingdom on February 03, 2020. The United States found its first case

Table 4: The protein folding stability changes of 8 missense mutations. The folding stability change  $\Delta\Delta G = \Delta G_w - \Delta G_m$ , where  $\Delta G_w$  and  $\Delta G_m$  are the folding free energies of the wild type and the mutant type, respectively.  $R_g^w$  and  $R_g^m$  are FRI rigidities for the wild type and mutant type of the protein with  $\eta = 8\text{\AA}$ . Here,  $\langle C_s^w \rangle$  and  $\langle C_s^m \rangle$  are the average subgraph centralities of the wild type and the mutant type, respectively.  $\Delta\bar{R}_g$  and  $\Delta\langle\bar{C}_s\rangle$  are the molecular FRI rigidity changes and the average subgraph centrality change.

Rank	Mutation	Protein	$\Delta\Delta G(\text{kcal/mol})$	$R_g^w$	$R_g^m$	$\Delta\bar{R}_g\%$	$\langle C_s^w \rangle$	$\langle C_s^m \rangle$	$\Delta\langle\bar{C}_s\rangle\%$
Top 1	14408C>T-(P323L)	NSP12(RdRp)	-0.11	9.77	9.87	-1.0	1105	1959	-77
Top 2	23403A>G-(D614G)	S protein	0.34	10.27	10.10	1.7	2376	1386	42
Top 3	25563G>T-(Q57H)	ORF3a	-0.24	11.33	11.66	-1.5	25061	58592	-134
Top 4	1059C>T-(T85I)	NSP2	-0.05	12.37	12.51	-1.1	89764	166399	-85
Top 5	28144T>C-(L84S)	ORF8	-0.99	12.28	12.05	1.9	12810	6504	49
Top 6	17858A>G-(Y541C)	NSP13(Helicase)	-0.81	11.52	10.40	9.7	506640	7271	99
Top 7	17747C>T-(P504L)	NSP13(Helicase)	-0.59	7.52	7.54	0.3	4668	6094	-31
Top 8	27964C>T-(S24L)	ORF8	0.20	11.72	11.66	0.5	11685	29777	-155

related to 14408C>T-(P323L) on February 28, 2020. Since then, this mutation has become one of the single dominant mutations in the United States. Among 7823 complete genome sequences, 5918 are connected to P323L. Figure 3 shows the sequence alignment for the NSP12 of SARS-CoV-2, SARS-CoV [15], bat coronavirus RaTG13 [16], bat coronavirus CoVZC45 [17], and bat coronavirus BM48-31 [18]. The red rectangle marks the mutant residue with its neighborhoods. One can see that SARS-CoV-2 NSP12 is highly conservative among the other four species. Although P323L mutates the residue of proline (P) to leucine (L), these two residues are both non-polar and aliphatic, indicating P323L may not affect the functionality of NSP12 too much. Figure 4 (a) shows the three-dimensional (3D) structure of SARS-CoV-2 NSP12, which is created by PyMol [19].

NSP12 is of paramount importance to the SARS-CoV-2 replication and transcription machinery. It is one of the primary targets for antiviral drugs. Researchers have engaged in developing new antiviral therapeutics that target NSP12 for combating COVID-19 in the past few months. NSP12 and its cofactors NSP7 and NSP8 can form a hollow cylinder-like supercomplex that interacts with NSP14, an exonuclease that has the proofreading capability [20]. The structure of NSP12 contains a nidovirus-specific N-terminal extension domain (residues D60 to R249) and a right-hand RdRp domain (S367 to F920), which are connected by an interface domain (residues A250 to R365) [21]. Mutation P323L locates on this interface domain, which, however, is still poorly characterized.

The increasing ratio of P323L in Figure 2 indicates that this type of mutations may favor SARS-CoV-2 and enhance the transmission capacity of SARS-CoV-2. However, the negative folding stability changes in Table 4 suggest that P323L destabilizes the NSP12, which may make SARS-CoV-2 less contagious. Figure 4 (b) and (c) show the differences of FRI rigidity index and subgraph centrality between the network with wild type and the network with mutant type. The atoms on the mutant residue is mark with big color balls. We deduce that the slight increase in the rigidity means the mutation makes the protein less flexible or less cooperative in synergistic interactions.

Based on the statistical values of co-mutations in Table 3, we can see that 14408C>T-(P323L) always shows up with 1059C>T-(T85I), 23403A>G-(D614G), 25563G>T-(Q57H), and 27964C>T-(S24L) simultaneously. Therefore, we can deduce that the increasing tendency of P323L ratios per 10-days is due to its co-mutation with other infectivity-strengthening mutations, such as 23403A>G-(D614G).

## 2.2.2 Mutation on the Spike protein

Mutation 23403A>G-(D614G) located on the spike protein has the second-highest frequency in the United States, which has been recently considered as the key mutation that makes SARS-CoV-2 more infectious



Figure 3: Sequence alignments for the NSP12 of SARS-CoV-2, SARS-CoV, bat coronavirus RaTG13, bat coronavirus CoVZC45, bat coronavirus BM48-31. Detailed numbering is given according to SARS-CoV-2. One high-frequency mutation 14408C>T (P323L) is detected on the NSP12 protein. Here, the red rectangle marks the P323L mutations with its neighborhoods.

worldwide [22]. From Table 2, one can see that mutation D614G was initially detected in China on January 24, 2020. However, D614G was not widely spread in China, which is probably due to the strict social distancing rules and the Wuhan lockdown implemented by the Chinese government. In the middle of February, the hot spot with the most COVID-19 cases shifted from China to Europe and the D614G variant rapidly pervades in Europe [7]. The first case with the D614G mutation in the United States was reported on February 28, 2020. Since then, the D614G mutation has become a majority variant, and 68.7% of patients carry D614G in the United States as of July 14, 2020.

The SARS-CoV-2 spike protein is a multi-functional molecule that interacts with the ACE2, which mediates the virus entering into the host cells [23]. Figure 6 (a) depicts the 3D structure of the SARS-CoV-2 spike protein that interacts with the host ACE2. The D614G mutation is one of the most popular mutations of SARS-CoV-2, which changes the amino acid aspartate (D) with the polar negative charged side changes to the amino acid glycine (G) with a non-polar side chain. Figure 5 depicts the sequence alignment for the S protein of SARS-CoV-2, SARS-CoV, bat coronavirus RaTG13, bat coronavirus CoVZC45, and bat coronavirus BM48-31. We use the red rectangle to mark the position of D614G and its neighborhoods. The S protein of bat coronavirus RaTG13 has the highest similarity of 97.47% with the S protein of SARS-CoV-2. One can see that amino acids near position 614 are very conservative, indicating that D614G mutation will play an important role in the functions of the S protein of SARS-CoV-2. Moreover, the D614G mutation ratio



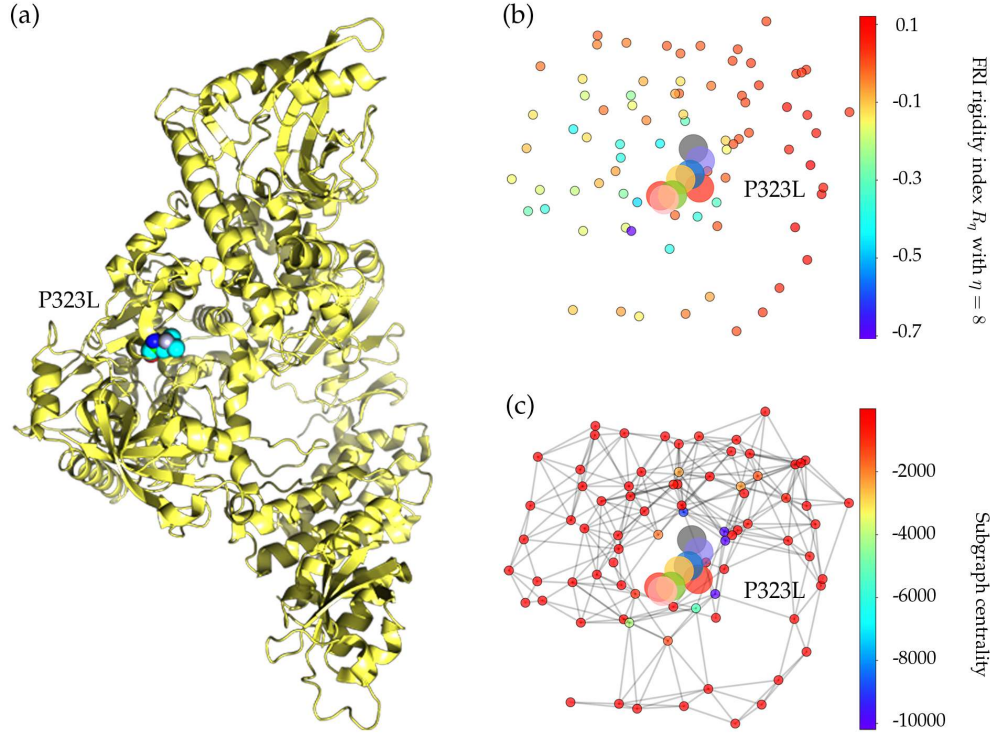


Figure 4: (a) The 3D structure of SARS-CoV-2 NSP12 protein. The mutated residue is marked with color balls. (b) The differences of FRI rigidity index between the network with wild type and the network with mutant type. (c) The difference of the subgraph centrality between the network with wild type and the network with mutant type.

in Figure 2 keeps climbing, and the ratio is approaching the unity after June 16, 2020, which also proves that SARS-CoV-2 becomes more contagious as time goes on.

Table 4 shows a positive folding free energy change, indicating the stabilization effect of the mutation. Figure 6 (b) and (c) illustrate the difference of FRI rigidity index and the subgraph centrality between the network with wild type and the network with mutant type. The FRI rigidity decreases following the mutation, endowing the S protein higher flexibility to interact with ACE2. The same is confirmed by average subgraph centrality.

### 2.2.3 Mutation on the ORF3a protein

Mutation 25563G>T-(Q57H) is on the ORF3a protein. It was first found in Singapore on February 16, 2020. The case in the United States was detected on February 28, 2020. As of July 14, 2020, 3865 complete genome sequences have the Q57H mutation in the United States, while 6765 isolates carry this type of single mutation in the world. The Q57H mutation changes the amino acid glutamine (Q) with a non-charged polar side chain to the positively charged polar side chain of amino acid histidine (H). Figure 7 shows the sequence alignment results in different species. The ORF3a of SARS-CoV-2 and SARS-CoV share a 71.53% sequence similarity. The red rectangle marks the Q57H mutations with its two neighborhoods. Similarly, one can see that the amino acids nearby position 57 are all conservative in all of 5 species. Moreover, Figure 8 (b) visualizes the SARS-CoV-2 ORF3a proteoform, where we use red to mark the wild type amino acid glutamine (Q) and yellow to address the mutant amino acid histidine (H). Spatiotemporally, mutation Q57H locates at the intramolecular interface and in touch with the membrane, which indicates the special functionality changes that Q57H can induce., and Figure 8 (b) is the visualization of ORF3a, which is generated by an



Figure 5: Sequence alignments for the S proteins of SARS-CoV-2, SARS-CoV, bat coronavirus RaTG13, bat coronavirus CoVZC45, bat coronavirus BM48-31. Detailed numbering is given according to SARS-CoV-2 S protein. One high-frequency mutation 23403A>G- (D614G) is detected on the S protein. Here, the red rectangle marks the D614G mutations with its neighborhoods

online server Protter [24].

The ORF3a gene of SARS-CoV-2 encodes 275 amino acids with TNF receptor-associated factors (TRAFs), ion channel, and caveolin binding domain. Previous studies have shown that SARS-CoV ORF3a contains a cysteine-rich motif, a tyrosine-based sorting motif, and a diacidic EXD motif, which are the critical domains that participate in the apoptosis and activate the innate immune signaling receptor NLRP3 (NOD-, LRR-, and pyrin domain-containing 3) inflammasome [25,26]. ORF3a of SARS-CoV-2 shares 71.53% similarity



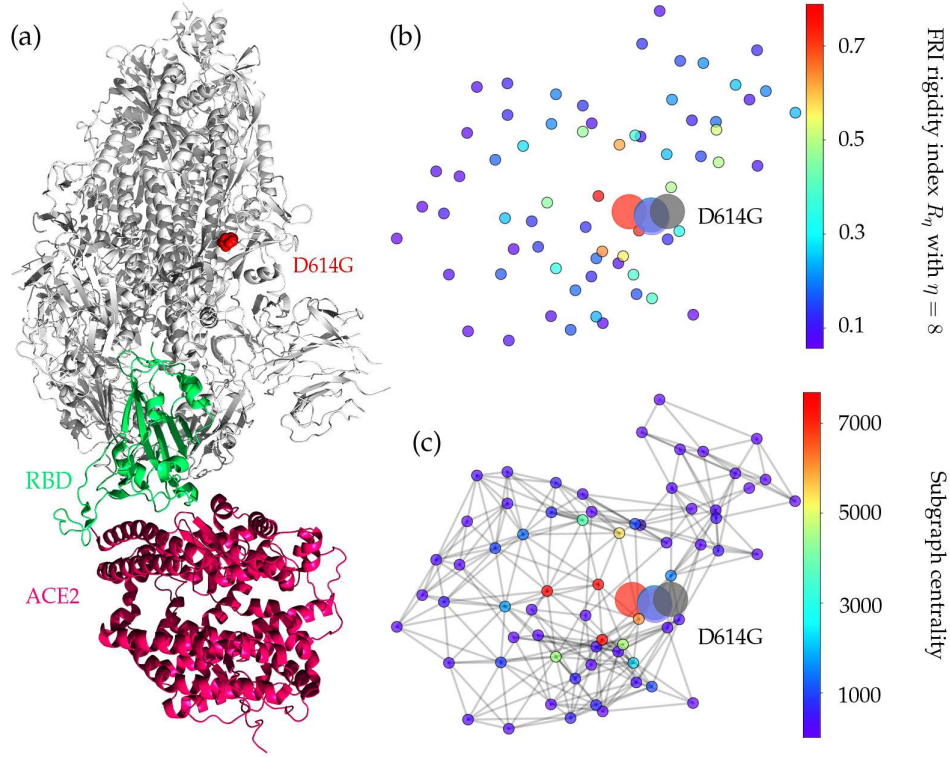
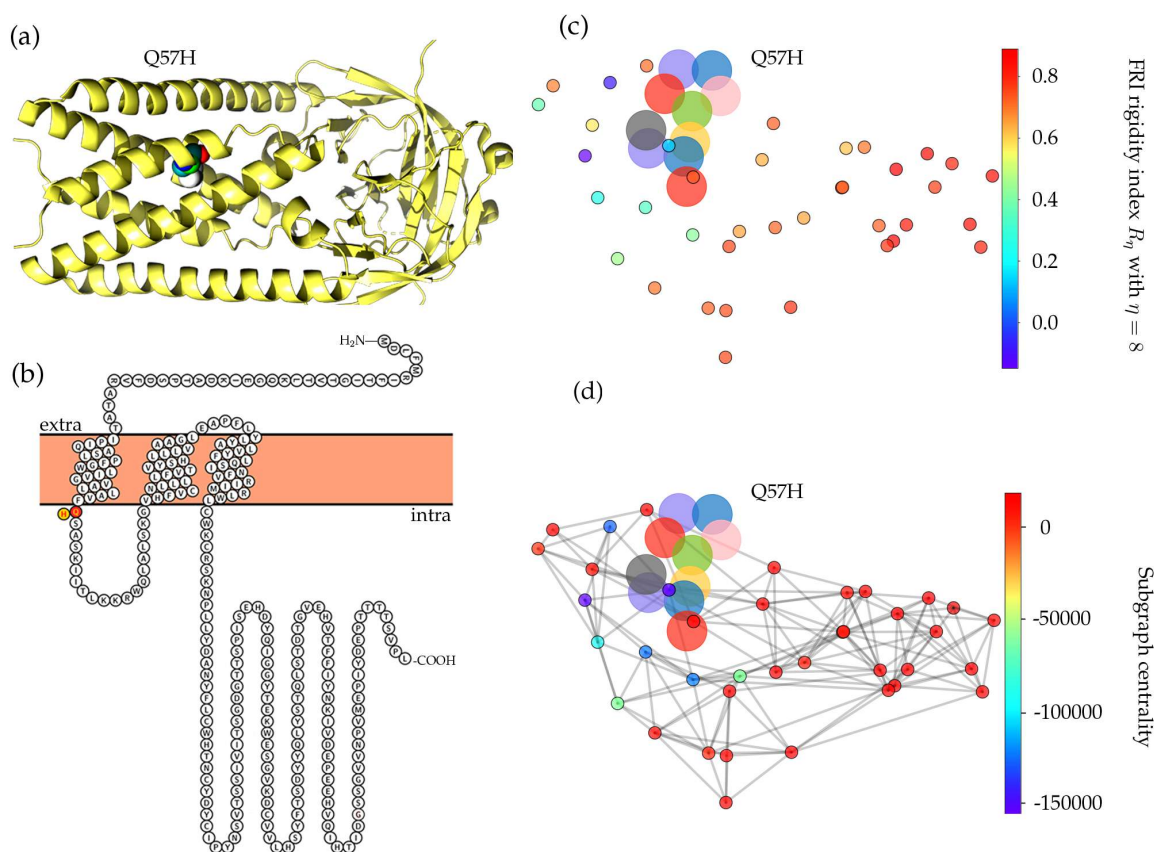


Figure 6: Illustration of S-protein and ACE2 interaction. The RBD is displayed in green, the ACE2 is given in red, and mutation D614G is highlighted in red. (b) The difference of FRI rigidity index between the network with wild type and the network with mutant type. (c) The difference of the subgraph centrality between the network with wild type and the network with mutant type.

with the ORF3a of SARS-CoV. Similarly, SARS-CoV-2 ORF3a protein is widely expressed in intracellular and plasma membranes, which induces apoptosis and inflammatory responses in the infected cells and transfected cells [26]. Figure 8 (c) and (d) depict the differences of the FRI rigidity index and the subgraph centrality between the network with wild type and the network with mutant type. We can see that the ORF3a becomes more rigidity after the mutation, which may result in a less flexible mutant for ORF3a to involve in the apoptosis and inflammatory response.

As illustrated in Figure 2, the ratio of the 25563G>T-(Q57H) mutation on ORF3a in each 10-day period kept increasing once it was introduced to the United States. This tendency indicates that mutation Q57H becomes popular in the viral patients of the United States, which may make the SARS-CoV-2 more infectious. From Table 3, we can see that 4827 SNP variants have 25563G>T-(Q57H) mutation on ORF3a. Among them, 4818 variants have the [25563G>T-(Q57H), 23403A>G-(D614G)] co-mutations. As we mentioned above, the S protein plays an important role in viral transmission, indicating that mutation 25563G>T-(Q57H) may also be of great importance for viral transmission. The negative folding stability changes of mutation Q57H in Table 4 reveals that ORF3a becomes unstable following the Q57H mutation, which may harm the function of ORF3a in apoptosis and increase the viral load in the host cell. However, the Q57H mutation locates near TRAF, ion channel, and caveolin binding domain [26], which may affect the NLRP3 inflammasome activation. ORF3a activates the innate immune signaling receptor NLRP3 inflammasome via mechanisms such as ion-redistribution and lysosomal disruption, which causes tissue inflammation during respiratory illness and the production of inflammatory cytokines [27].

SARS-CoV-2	1	M	D	L	F	M	R	I	F	T	G	V	T	L	K	G	E	I	K	D	A	T	P	S	D	F	V	R	A	T	I	P	I	Q	A	S	L	P	F	G	W	L	V	I	G	V	A	L	V	F	S	A	K	I	I	T	L	K	R	W	L	A	L	S	K	G	V	H	F	V	C	N	L	L	L	F	V	T	91																																																																																																																																																																																																																																																																																																																																																																																																																																																																																																																																							
SARS-CoV	1	M	D	L	F	M	R	I	F	T	G	V	T	L	K	G	E	I	K	D	A	T	P	S	D	F	V	R	A	T	I	P	I	Q	A	S	L	P	F	G	W	L	V	I	G	V	A	L	V	F	S	A	K	I	I	A	L	N	K	R	W	L	A	L	S	K	G	V	H	F	V	C	N	L	L	L	F	V	T	91																																																																																																																																																																																																																																																																																																																																																																																																																																																																																																																																						
Bat-SL-RaTG13	1	M	D	L	F	M	R	I	F	T	G	V	T	L	K	G	E	I	K	D	A	T	P	S	D	F	V	R	A	T	I	P	I	Q	A	S	L	P	F	G	W	L	V	I	G	V	A	L	V	F	S	A	K	I	I	T	L	K	R	W	L	A	L	S	K	G	V	H	F	V	C	N	L	L	L	F	V	T	91																																																																																																																																																																																																																																																																																																																																																																																																																																																																																																																																							
Bat-SL-CoVZC45	1	M	D	L	F	M	R	I	F	T	G	V	T	L	K	G	E	I	K	D	A	T	P	S	D	F	V	R	A	T	I	P	I	Q	A	S	L	P	F	G	W	L	V	I	G	V	A	L	V	F	S	A	K	I	I	T	L	K	R	W	L	A	L	S	K	G	V	H	F	V	C	N	L	L	L	F	V	T	91																																																																																																																																																																																																																																																																																																																																																																																																																																																																																																																																							
Bat-SL-BM4C31	1	M	D	L	F	N	I	F	T	G	V	T	L	K	G	E	I	R	Q	G	K	V	E	N	S	P	A	S	F	H	S	T	A	S	L	P	L	A	T	P	F	G	W	L	V	I	G	V	A	L	V	F	S	A	A	L	I	P	F	N	S	L	W	G	R	C	L	Y	S	F	Q	L	L	N	L	L	F	V	T	91																																																																																																																																																																																																																																																																																																																																																																																																																																																																																																																																						
SARS-CoV-2	92	S	H	L	L	V	A	A	G	L	E	A	P	F	L	Y	L	A	L	V	F	L	O	S	I	N	F	V	R	I	M	R	L	W	L	C	W	K	C	R	S	K	N	P	L	L	Y	D	A	N	F	L	C	W	H	T	N	C	Y	P	C	I	P	Y	N	S	V	T	S	S	I	V	T	S	G	D	G	T	T	S	P	I	S	E	H	182																																																																																																																																																																																																																																																																																																																																																																																																																																																																																																																																
SARS-CoV	92	S	H	L	L	V	A	A	G	L	E	A	P	F	L	Y	L	A	L	V	F	L	O	S	I	N	A	C	R	I	M	R	L	W	L	C	W	K	C	R	S	K	N	P	L	L	Y	D	A	N	F	L	C	W	H	T	N	C	Y	P	C	I	P	Y	N	S	V	T	I	V	T	S	G	D	G	T	T	S	P	I	S	E	H	182																																																																																																																																																																																																																																																																																																																																																																																																																																																																																																																																		
Bat-SL-RaTG13	92	S	H	L	L	V	A	A	G	L	E	A	P	F	L	Y	L	A	L	V	F	L	O	S	I	N	F	V	R	I	M	R	L	W	L	C	W	K	C	R	S	K	N	P	L	L	Y	D	A	N	F	L	C	W	H	T	N	C	Y	P	C	I	P	Y	N	S	V	T	S	S	I	V	T	S	G	D	G	T	T	S	P	I	S	E	H	182																																																																																																																																																																																																																																																																																																																																																																																																																																																																																																																																
Bat-SL-CoVZC45	92	S	H	L	L	V	A	A	G	L	E	A	P	F	L	Y	L	A	L	V	F	L	O	S	I	N	F	V	R	I	M	R	L	W	L	C	W	K	C	R	S	K	N	P	L	L	Y	D	A	N	F	L	C	W	H	T	N	C	Y	P	C	I	P	Y	N	S	V	T	S	S	I	V	T	S	G	D	G	T	T	S	P	I	S	E	H	182																																																																																																																																																																																																																																																																																																																																																																																																																																																																																																																																
Bat-SL-BM4C31	92	S	H	L	L	V	A	A	G	L	E	A	P	F	L	Y	L	L	A	L	I	G	C	V	F	F	R	L	L	R	L	L	C	W	L	C	K	C	K	S	K	N	P	L	L	Y	D	S	N	F	V	C	W	H	T	H	T	H	O	C	I	P	Y	N	S	I	N	T	I	V	L	T	A	D	G	V	T	I	P	I	R	T	Q	182																																																																																																																																																																																																																																																																																																																																																																																																																																																																																																																																		
SARS-CoV-2	183	D	Y	Q	I	G	G	Y	E	K	W	E	S	G	V	K	D	C	V	V	L	H	S	Y	F	T	S	D	Y	Q	L	S	T	Q	L	S	T	D	T	G	V	E	H	V	T	F	F	I	N	K	I	V	D	E	P	E	E	H	Q	I	H	T	I	D	G	S	S	G	V	N	P	V	M	E	P	I	Y	D	E	P	T	T	T	T	S	V	273																																																																																																																																																																																																																																																																																																																																																																																																																																																																																																																															
SARS-CoV	183	D	Y	Q	I	G	G	Y	E	K	W	E	S	G	V	K	D	C	V	V	L	H	S	Y	F	T	S	D	Y	Q	L	S	T	Q	L	S	T	D	T	G	V	E	H	V	T	F	F	I	N	K	I	V	D	E	P	E	E	H	Q	I	H	T	I	D	G	S	S	G	V	N	P	A	M	D	P	I	Y	D	E	P	T	T	T	T	S	V	272																																																																																																																																																																																																																																																																																																																																																																																																																																																																																																																															
Bat-SL-RaTG13	183	D	Y	Q	I	G	G	Y	E	K	W	E	S	G	V	K	D	C	V	V	L	H	S	Y	F	T	S	D	Y	Q	L	S	T	Q	L	S	T	D	T	G	V	E	H	V	T	F	F	I	N	K	I	V	D	E	P	E	E	H	Q	I	H	T	I	D	G	S	S	G	V	N	P	A	M	D	P	I	Y	D	E	P	T	T	T	T	S	V	273																																																																																																																																																																																																																																																																																																																																																																																																																																																																																																																															
Bat-SL-CoVZC45	183	D	Y	Q	I	G	G	Y	E	K	W	E	S	G	V	K	D	C	V	V	L	H	S	Y	F	T	S	D	Y	Q	L	S	T	Q	L	S	T	D	T	G	V	E	H	V	T	F	F	I	N	K	I	V	D	E	P	E	E	H	Q	I	H	T	I	D	G	S	S	G	V	N	P	A	M	D	P	I	Y	D	E	P	T	T	T	T	S	V	273																																																																																																																																																																																																																																																																																																																																																																																																																																																																																																																															
Bat-SL-BM4C31	183	D	Y	Q	I	G	G	Y	F	K	W	E	S	G	V	K	D	Y	L	T	L	I	G	P	F	T	S	D	Y	Q	L	S	T	Q	L	S	T	D	T	G	I	N	N	A	T	F	F	L	F	S	K	N	D	E	Q	E	S	V	Q	V	H	T	I	D	G	S	S	G	V	N	-	-	-	P	I	Y	D	E	P	T	T	T	S	V	269																																																																																																																																																																																																																																																																																																																																																																																																																																																																																																																																	
SARS-CoV-2	274	P	L																																																																																																																																																																																																																																																																																																																																																																																																																																																																																																																																																																																																																			



#### 2.2.4 Mutation on the NSP2 protein

T85 on the NSP2 is polar and non-charged, and it changes to a non-polar residue I85 after the mutation. Figure 10 (a) shows the 3D structure of SARS-CoV-2 NSP2. From Figure 9, we can see that coronavirus NSP2 is relatively conservative for the first 91 residues. Moreover, the T85 residue with its neighbors is all conservative in the other four SARS-like sequences, indicating this type of mutations may be substantial to coronavirus structures and properties.

NSP2 is also a viral protein that does not attract much research attention. In the SARS-CoV genome, the deletion of NSP2 will only result in a modest reduction in viral titers, which is considered to be a dispensable protein [28]. Table 4 shows that the folding stability change of T85I is -0.05 kcal/mol. Although the negative value reveals that T85I may destabilize the structure of NSP2, this small change is negligible. The FRI rigidity change is also minor, as is shown in Figure 4 (c), indicating the mutation of T85I on the NSP2 does not change the flexibility of NSP2 too much. However, the growing trend in Figure 2 still indicates that 1059C>T-(T85I) is an infectivity-strengthening mutation, which mainly benefits from the co-mutation with other infectivity-strengthening mutations, such as 23403A>G-(DD614) and 25563G>T-(Q57H).

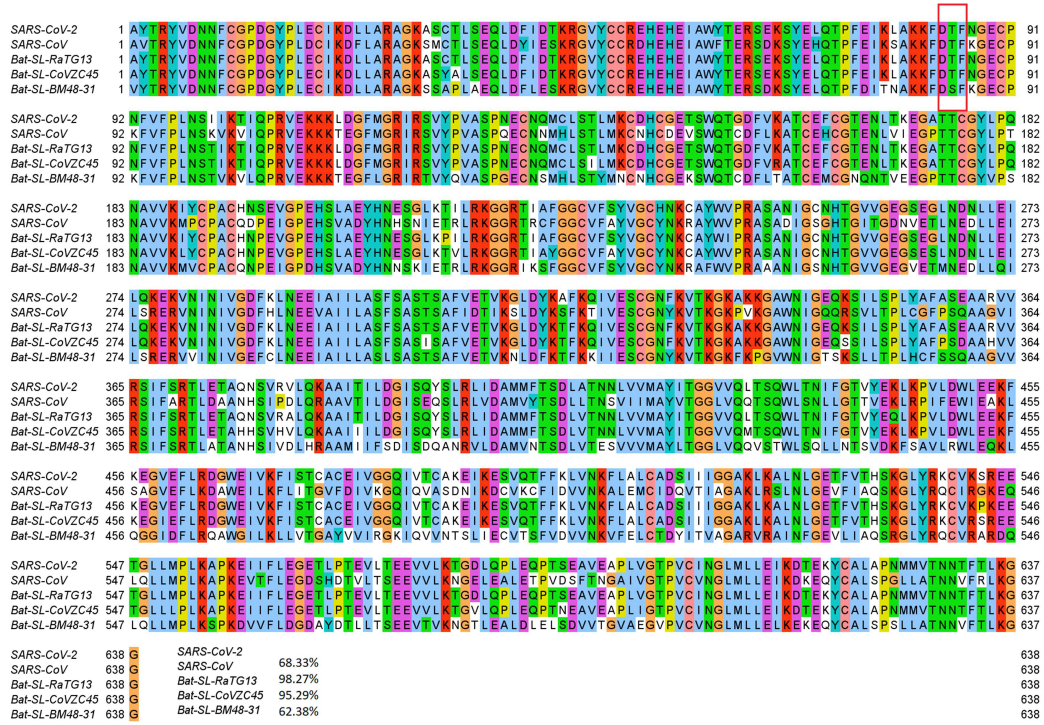


Figure 9: Sequence alignments for the NSP2 of SARS-CoV-2, SARS-CoV, bat coronavirus RaTG13, bat coronavirus CoVZC45, bat coronavirus BM48-31. Detailed numbering is given according to SARS-CoV-2. One high-frequency mutation 1059C>T-(T85I) locates on the NSP2 protein. Here, the red rectangle marks the T85I position with its neighborhoods.

## 2.2.5 Mutations on the NSP13 protein

NSP13 of SARS-CoV-2 is a superfamily 1 helicase, which can unwind a double-stranded RNA (dsRNA) or DNA (dsDNA) in the 5' to 3' direction into two single-stranded nucleic acids. Moreover, NSP13 can hydrolyze the deoxyribonucleotide and ribonucleotide triphosphates, which are involved in the ATP-coupling process [29, 30]. Furthermore, NPS13 is recruited to the double-membranes vesicles (DMVs) which are mainly found in the cell's perinuclear area during viral infection, indicating that NSP13 is crucial to the viral infection and replication [31]. As illustrated in Figure 11, NSP13 of SARS-CoV-2 shares the most homology with the other 4 species and is one of the most conservative proteins in SARS-CoV-2 genome.



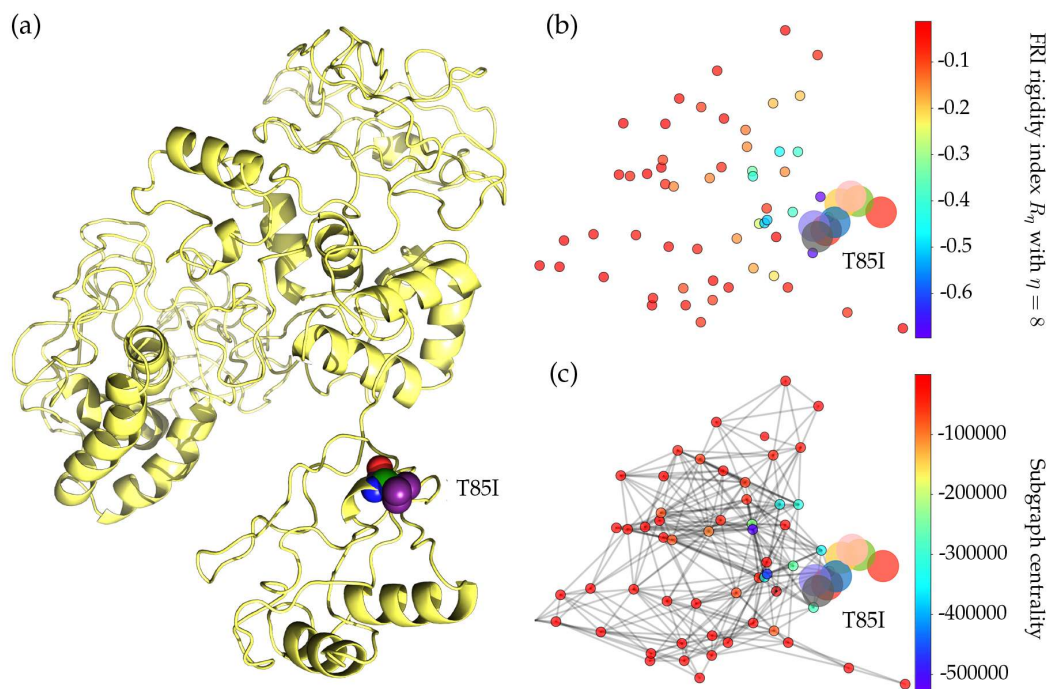


Figure 10: (a) The 3D structure of SARS-CoV-2 NSP2 protein. The mutant residue is marked with color balls. (b) The difference of FRI rigidity index between the network with wild type and the network with mutant type. (c) The difference of the subgraph centrality between the network with wild type and the network with mutant type.

Therefore, the existence of two high-frequency mutations on the NSP13 is very unusual.

Similar to 27964C>T-(S24L), although 17858A>G-(Y541C), 17747C>T-(P504L) are in the final list in Table 2, more than 87% of them were detected in the United States. Mutation Y541C changes the amino acid tyrosine (Y) to cysteine (C). Figure 12 shows the 3D structure of SARS-CoV-2 NSP13, where the mutant residue is marked with color balls. It is worthwhile to note that tyrosine has an aromatic side chain, while cysteine only has a polar non-charged side chain, indicating that the 3D structure of NSP13 will be incredibly affected. Moreover, the other single mutation at the residue position 504 will not change the structure of NSP13 very much since both the mutant and wild-type residues are non-polar aliphatic residues.

From Figure 2, one can note that both mutations on the NSP13 have the same trajectory of the mutation ratios over time. Once mutations 17858A>G-(Y541C) and 17747C>T-(P504L) were first found in the United States, they had a rapid increase in the first two weeks. However, these two mutations do not benefit SARS-CoV-2. In early March, the ratio of both mutations start to decrease and approach zero after May 19, 2020, suggesting that mutations 17858A>G-(Y541C) and 17747C>T-(P504L) may hinder the transmission of SARS-CoV-2. It is interesting to note that in Table 3, 17858A>G-(Y541C) and 17747C>T-(P504L) never show up with 23403A>G-(D614G) in more than a thousand SNP variant, which provides a side evidence that these two mutations may inhibit the contagiousness of SARS-CoV-2.

Table 4 shows that both high-frequency mutations Y541C and P504L have negative folding stability changes, which will destabilize the structure of NSP13. As stated earlier, mutations 17858A>G-(Y541C) and 17747C>T-(P504L) happen simultaneously after analyzing 24715 genome sequences, which means the folding stability changes on the NSP13 are superimposed by two simultaneously occurred mutations. This also explains the same decreasing tendency in Figure 2 after early March. Based on the protein-specific analysis mentioned above, we can deduce that mutations Y541C and P504L prevent SARS-CoV-2 from efficiently interacting with host interferon signaling molecules and impede the NSP13 from efficacious participation

in the replication/transcription process. Figure 4 (b) shows the difference of the FRI rigidity index between the network with wild type and the network with the mutant type. One mutation (17747C>T-(P504L)) does not affect the rigidity much whereas the other mutation (17858A>G-(Y541C)) leads to a significant decrease in the NSP12 rigidity, which may make NSP13 not as robust as before to involve in the viral infection and replication process.

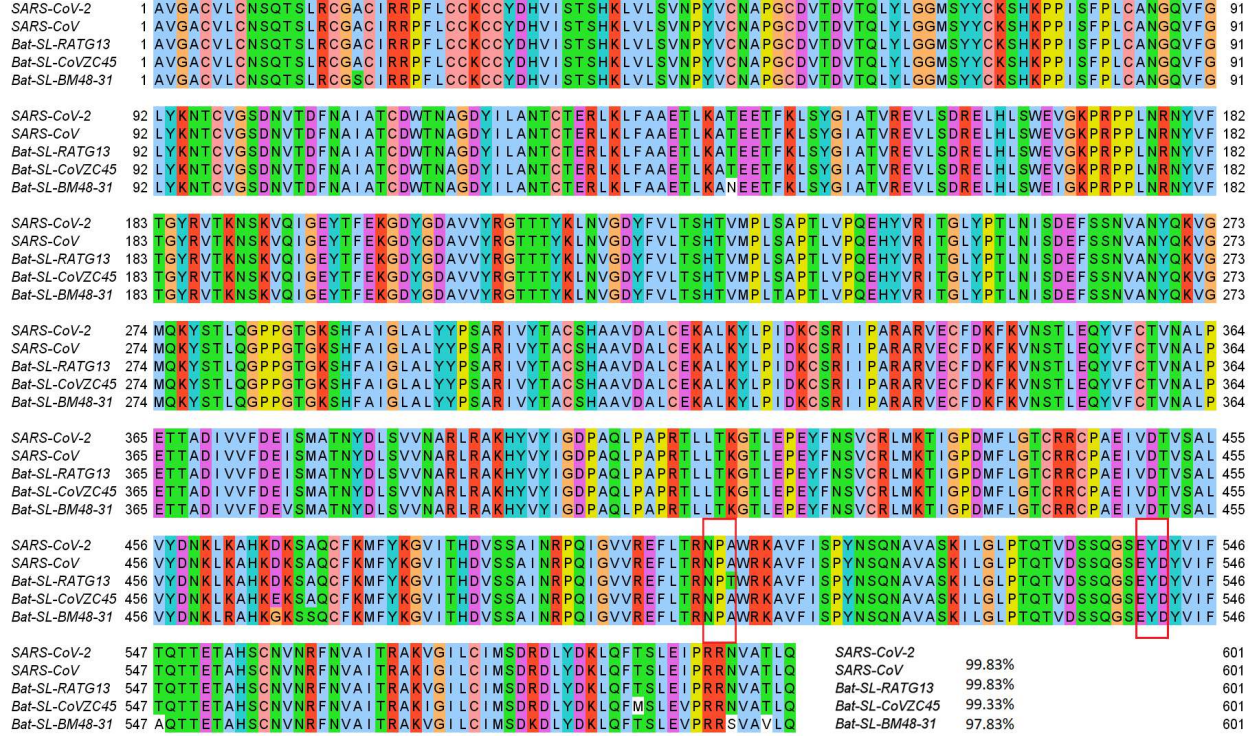


Figure 11: Sequence alignments for the NSP13 protein of SARS-CoV-2, SARS-CoV, bat coronavirus RaTG13, bat coronavirus CoVZC45, bat coronavirus BM48-31. Detailed numbering is given according to SARS-CoV-2. Two high-frequency mutations 17858A>G-(Y541C) and 17747C>T-(P504L) locate on NSP13. Here, the red rectangles mark the Y541C and P504: mutations with their neighborhoods.

## 2.2.6 Mutations on the ORF8 protein

The ORF8 protein also has two high-frequency mutations, 28144T>C-(L84S) and 27964C>T-(S24L). Notably, although 27964C>T-(S24L) has the lowest frequency in the top 8 missense mutations, more than 94.1% mutation 27964C>T-(S24L) worldwide were found in the United States. Moreover, the first confirmed case with 27964C>T-(S24L) was discovered on February 20, 2020, in the United States, suggesting that S24L initially happened in the US. Another mutation on ORF8 is 28144T>C-(L84S), the number of sequences with the L84S mutation in the United States is 1437, which accounts for more than 50% proportion of the isolates in the world. It is interesting to address that these two high-frequency mutations S24L and L84S mutate reversibly. The amino acid serine (S) has a non-charged polar side chain, while the leucine (L) has a non-polar aliphatic residue. Figure 13 illustrates the sequence alignment of SARS-CoV-2 ORF8 with the other 4 species. The SARS-CoV-2 ORF8 shares a really low similarity among all the other four SARS-like species. SARS-CoV, Bat coronavirus RaTG13, Bat coronavirus CoVZC45, and Bat coronavirus BM48-31 have the same residues at positions 24 and 84. Nonetheless, SARS-CoV-2 ORF8 owns different types of residues. Here, we would like to address that although the ORF8 of SARS-CoV-2 at position 84 has a different residue compared to the other 4 species, it mutates back to S in 1434 isolates in the United States.



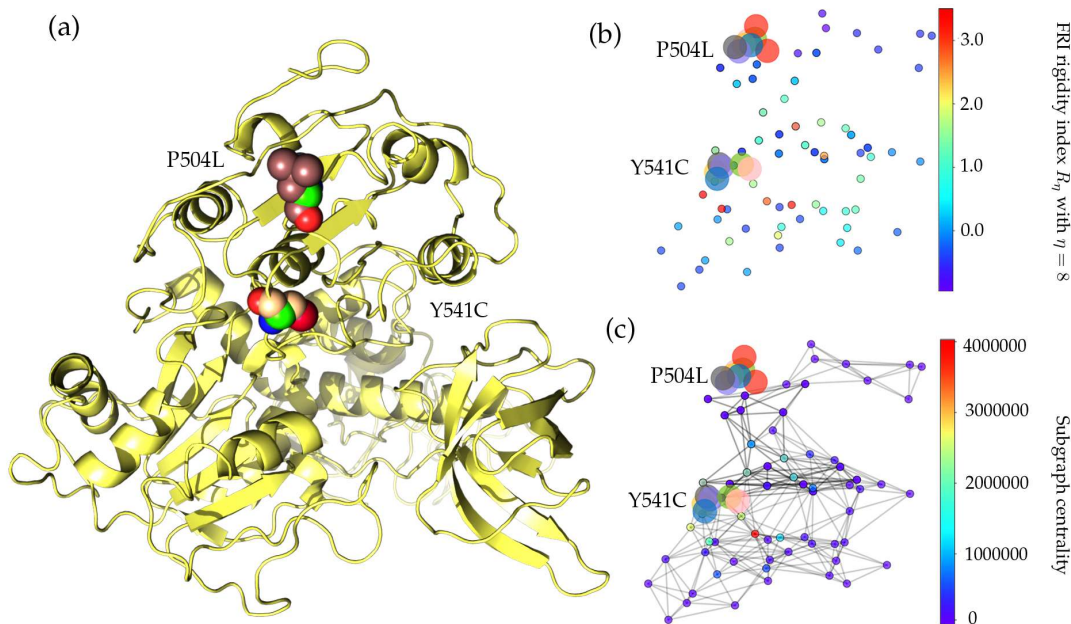


Figure 12: (a) The 3D structure of SARS-CoV-2 NSP13 protein. The mutant residue is marked with color balls. (b) The difference of FRI rigidity index between the network with wild type and the network with mutant type. (c) The difference of the subgraph centrality between the network with wild type and the network with mutant type.

Figure 14 (a) shows the 3D structure of SARS-CoV-2 ORF8. ORF8 protein of SARS-CoV-2 shares the least homology with SARS-CoV among all viral proteins, which mediates the immune evasion by interacting with major histocompatibility complex molecules class I (MCH-I) and down-regulating the surface expression of MHC-I on various cells [32]. Once the “outer” invaders or antigens (i.e., viruses) enter the host cell, the MCH-I will bind to them and bring them to the surface of the infected cell. Then, the T-cell receptors (TCRs) that are expressed by cytotoxic T cells (TCLs) can recognize this unique signal presented by MHC-I-peptide complex and directly eradicate the virus-infected cells, which is an effective and efficient anti-viral immune response [33]. However, in ORF8-expressing cells, the MHC-I protein becomes the major target for the lysosomal degradation mediated by bafilomycin A1 (Baf-A1), resulting in the limited expression of MHC-I. Therefore, ORF8 protein has an effect on downregulating MHC-I, which will favor SARS-CoV-2 to evade immune surveillance by hindering the presentation of antigen regulated by MHC-I [32].

In Figure 2, the ratio of S24L per 10 days is slightly going up before June 2, 2020. In the next ten days’ period, the sharp increase and sharp drop in the ratio are due to the limited complete genome sequences submitted to GISAID in June. However, the overall upward trend of the S24L ratio over time reveals that S24L may enhance SARS-CoV-2’s ability to spread. In contrast, the time evolution plot shows that the ratio of mutation 28144T>C-(L84S) goes up before the beginning of March, and then the ratio goes down and approach zero after May 23, 2020. Due to the small number of sequence data, we can say that the ratio of L84S has a decreasing tendency.

As discussed earlier, the female patients with S24L mutation on ORF8 account for a large proportion, which indicates that the S24L is most likely to happen in the female population in the United States.

Table 4 shows that the folding stability change of 28144T>C-(L84S) is -0.99 kcal/mol, indicating that ORF8 becomes unstable. Figure 14 (b) shows that the ORF8 becomes slightly less rigidity after both L84S and S24L mutations. To be noted, the rigidity changes induced by S24L is less than the L84S. Based on the function of ORF8 that involved in the immune response, we deduce that L84S may disfavor SARS-CoV-2

and favor the host immune surveillance to decrease the viral load in the human cells, which provides an explanation that the ratio of L84S in Figure 2 keeps decreasing. Meanwhile, the positive folding stability change of 27964C>T-(S24L) lists in Table 4 reveals that this type of mutation may enhance the function of ORF8. Therefore, the MHC-I will be inhibited more, and the eradication of SARS-CoV-2 in vivo will be hindered. This explains the increasing trend in the ratio of S24L. Notably, after analyzing 28726 complete genome sequences, none of them have mutations 28144T>C-(L84S) and 27964C>T-(S24L) happened simultaneously.

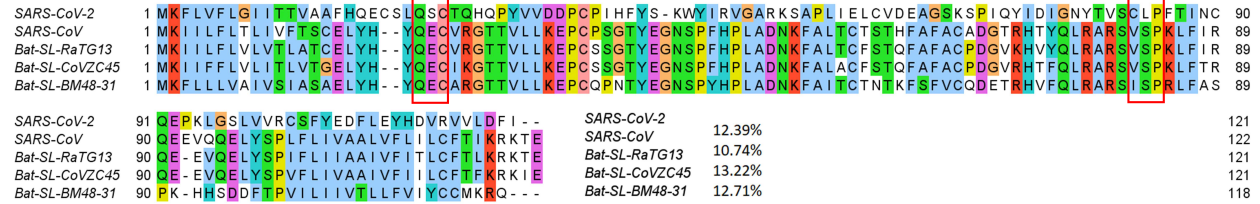


Figure 13: Sequence alignments for the ORF8 protein of SARS-CoV-2, SARS-CoV, bat coronavirus RaTG13, bat coronavirus CoVZC45, bat coronavirus BM48-31. Detailed numbering is given according to SARS-CoV-2. Two high-frequency mutations 28144T>C-(L84S) and 27964C>T-(S24L) locate on the ORF8. Here, the red rectangles mark the S24L and L84S mutations with their neighborhoods.

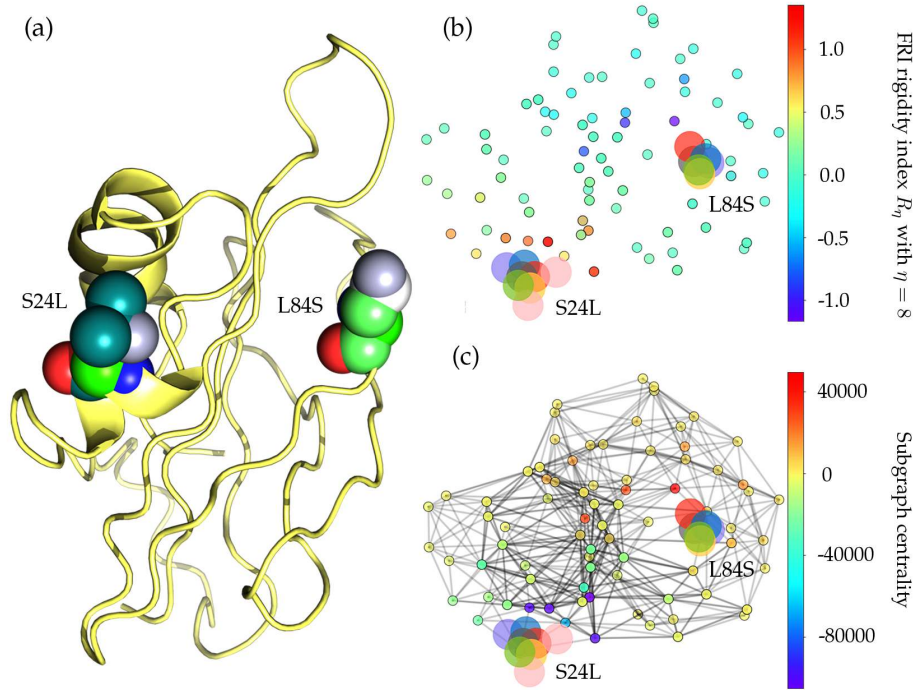


Figure 14: (a) The 3D structure of SARS-CoV-2 ORF8 protein. The mutant residue is marked with color balls. (b) The difference of FRI rigidity index between the network with wild type and the network with mutant type. (c) The difference of the subgraph centrality between the network with wild type and the network with mutant type.

## 2.3 Infectivity analysis

As mentioned above, SARS-CoV-2 enters the host cell by the interaction of the S protein and ACE2. The viral S protein is primed by TMPRSS2 to entail its cleavage at two potential sites, Arg685/Ser686 and Arg815/Ser816 [14]. Based on the 7823 SNP variants' information in the United States, we found 264 non-degenerate single mutations on the spike protein. Among them, 32 single mutations are detected on the receptor-binding domain (RBD). Moreover, 7 single mutations occurred on the receptor-binding motif

(RBM), the region that directly connects with the ACE2. In this section, we separate 7823 SNP variants in the United States into four clusters and calculate the mutation-induced binding affinity changes of S protein RBD and ACE2 in each cluster, which will help us understand the potential transmission tendency induced by the mutations on the S protein RBD. The binding affinity change induced by single mutation  $\Delta\Delta G = \Delta G_W - \Delta G_M$  is defined as the subtraction of the binding affinity of the mutant type ( $\Delta G_M$ ) from the binding affinity of the wild type ( $\Delta G_W$ ). Furthermore, the positive binding affinity change of a single mutation means that the mutation can enhance the binding affinity of the S protein RBD and ACE2 and make SARS-CoV-2 more infectious.

Figure 15 illustrates overall binding affinity changes  $\Delta\Delta G$  (kcal/mol) induced by 32 single mutations on SARS-CoV-2 S protein RBD. The color bar on the left-hand side of the figure represents the mutation frequency. We can see that 50% single mutations have positive binding changes (16 out of 32). Moreover, the frequency of mutations with positive binding affinity changes is higher than those with negative binding affinity changes, suggesting that SARS-CoV-2 is more likely to be infectious. Notably, the mutation 23010T>C-(V483A) has the highest frequency (30) localized on the RBM has the positive binding affinity change, which indicates that V483A is prevalent in COVID-19 patients' in the United States has a potential capacity to enhance the infectivity of SARS-CoV-2. However, mutations that locate away from the RBM will also have a crucial impact on the infectivity [34]. Although away from the RBM, the relatively high frequency and positive binding affinity changes of N354K, R403K, and G467S indicate more attention should be paid to them in the future. Additionally, an interesting finding is that the mutations occurred at the same residue position such as A348S and A348T, P384L and P384S, and Q414E and Q414P always have similar binding affinity changes.

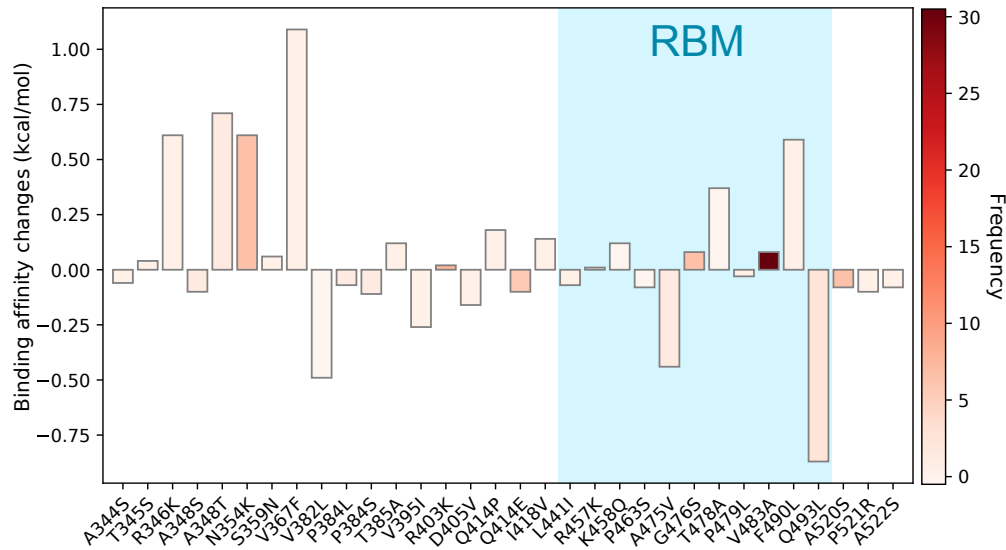


Figure 15: Overall binding affinity changes  $\Delta\Delta G$  (kcal/mol) on the receptor-binding domain (RBD). The blue color region marks the binding affinity changes on the receptor-binding motif (RBM). The height of each bar indicates the predicted  $\Delta\Delta G$ . The color indicates the occurrence frequency in the GISAID genome dataset.

Figure 16 illustrates the time evolution trajectories of 274 single mutations on SARS-CoV-2 S protein RBD. The red line shows the mutations that have positive binding affinity changes and the blue lines represent the mutations that have negative binding affinity changes. Here, we hypothesize that single mutations on S protein RBD with positive binding affinity changes will enhance the viral transmission since natural selection favors them. One can see that the red lines gradually outpace the blue lines as time progresses, suggesting that our hypothesis is correct.

Additionally, green lines indicate the evolutions of mutations that locate away from the RBM. The mutation that has the highest frequency is D614G, which was reported to enhance SARS-CoV-2 infectivity [35,36].



The trajectories of the other two high frequency S protein mutations (Q675R and E583D) indicate that they are co-mutations with infectivity-enhancing S protein mutations, such as D614G. We found that the other high frequency S protein mutation L5F is independent of mutation D614G.

Based on the genotyping results, we separate 7823 SNP variants from the United States into four clusters. Table 1 shows the mutation distribution of four clusters with number of samples ( $N_{NS}$ ) and total single mutation counts ( $N_{TF}$ ) in 20 states. Accordingly, a more specific analysis of the relationship between the sign of the binding affinity changes and the transmission ability is discussed below.

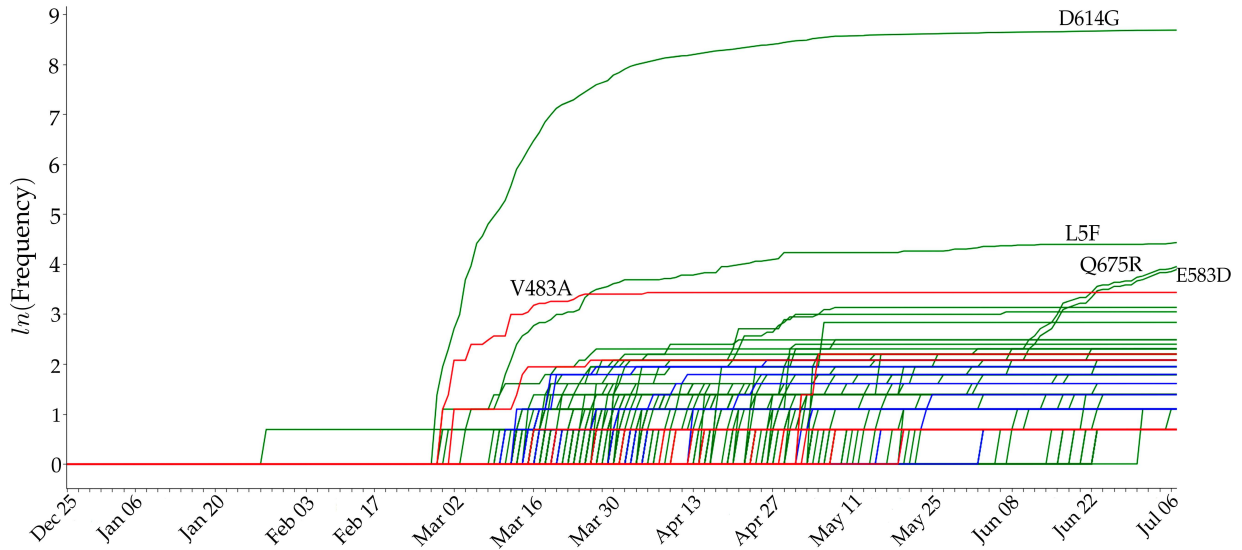


Figure 16: The time evolution of 264 SARS-CoV-2 S protein mutations. The red lines represent the RBD mutations that strengthen the infectivity of SARS-CoV-2 (i.e.,  $\Delta\Delta G$  is positive), the blue lines represent the RBD mutations that weaken the infectivity of SARS-CoV-2 (i.e.,  $\Delta\Delta G$  is negative), and the green lines are for S protein mutations that away from the RBD. The mutation with the highest frequency is D614G.

### 2.3.1 Cluster A infectivity

Figure 17 depicts the binding affinity changes of mutations in Cluster A. Total seven single mutations are found in Cluster A. Four of them have the positive binding affinity changes, while the other three mutations induced the negative binding affinity changes. Therefore, the mutations in Cluster B will strengthen the infectivity of SARS-CoV-2 in general. The V483A mutation is localized on the RBM with the highest frequency, indicating that V483A may favor SARS-CoV-2 by natural selection and cause SARS-CoV-2 more infectious. Although A348T and N354K have relatively low frequencies due to the limited number of genome samples, their high binding affinity changes lead to a more contagious SARS-CoV-2 substrain. It is worth noting that from Table 1, mutations in Cluster A are involved in all of the 20 states except for LA. However, DC, MA, and TX each only have one SARS-CoV-2 isolate related to Cluster A. Therefore, LA, DC, MA, and TX are not contributed to the infectivity-strengthening mutations in Cluster A.

### 2.3.2 Cluster B infectivity

Figure 18 describes the binding affinity changes of mutations in Cluster B. There are thirteen single mutations on the S protein RBD and six single mutations on the RBM. Although the number of single mutations with positive binding affinity changes is less than those with negative binding affinity changes, the high frequency of N354K slightly enhances the infectivity of SARS-CoV-2. We can notice that all of the states in

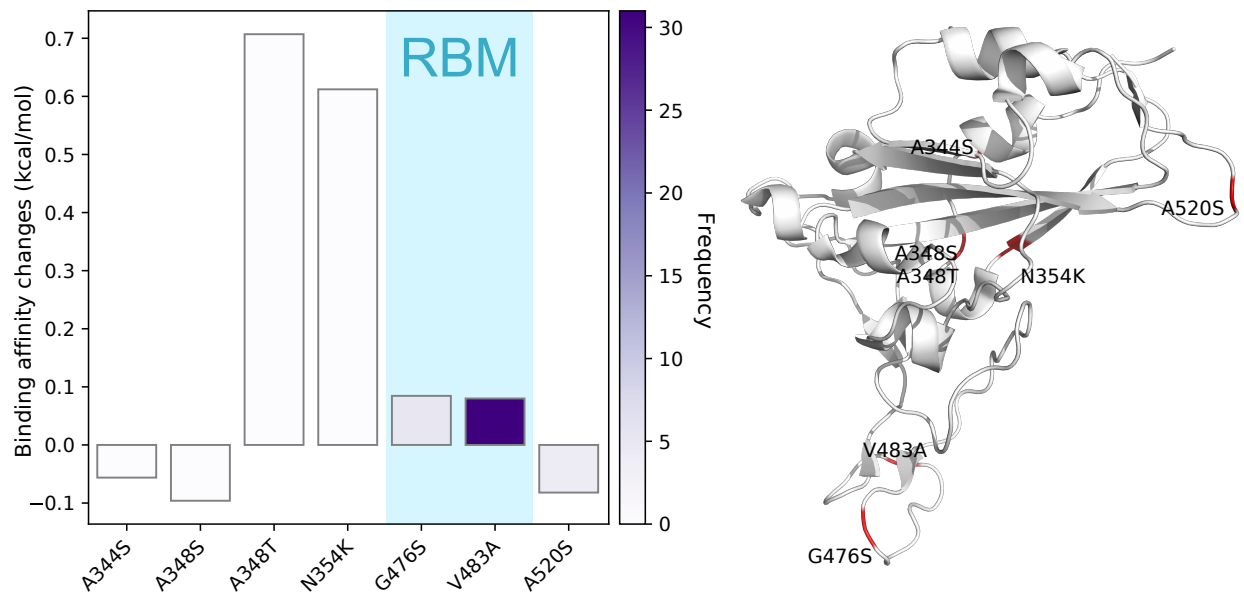


Figure 17: Cluster A. Left: binding affinity changes  $\Delta\Delta G$  (kcal/mol) induced by mutations in Cluster V. Right: mutations on the SARS-CoV-2 S protein RBD.

the Table 1 are associated with Cluster B. Additionally, a large proportion of single mutations in Cluster B are in CA, LA, MN, MI, NY, and WA.

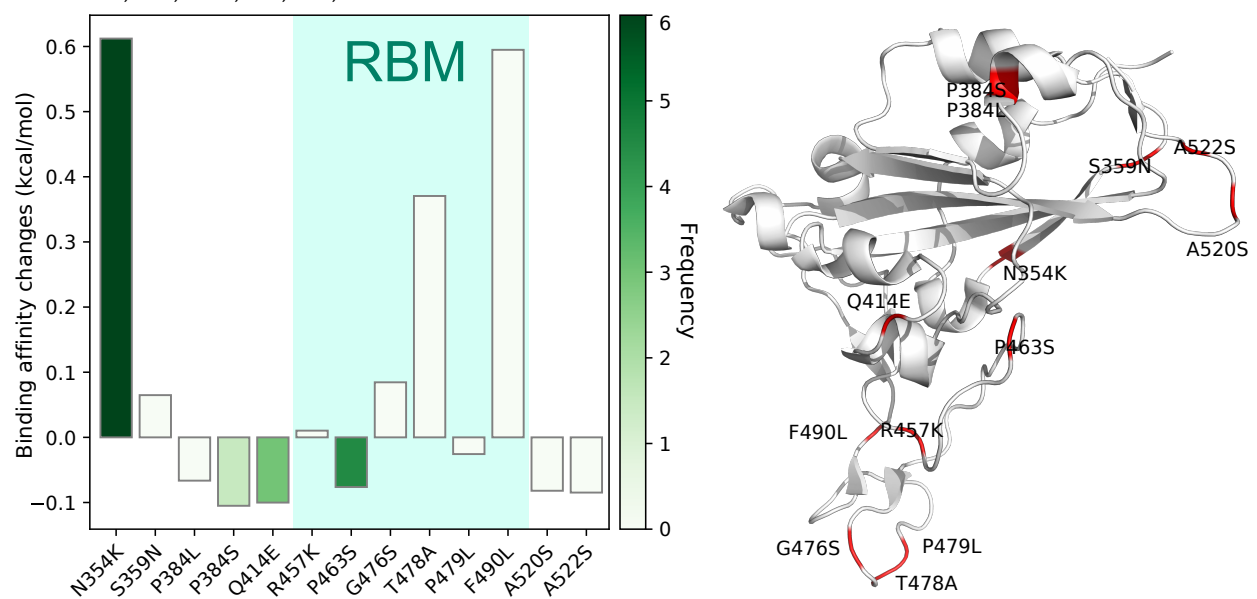


Figure 18: Cluster B. Left: binding affinity changes  $\Delta\Delta G$  (kcal/mol) induced by mutations in Cluster B. Right: mutations on the SARS-CoV-2 S protein RBD.

### 2.3.3 Cluster C infectivity

Figure 19 describes the binding affinity changes in Cluster C. This is the only cluster that has more infectivity-weakening RBD mutations. To be noted, A475V on the RBM has a negative binding affinity change with a relatively high frequency compared to the other 3 mutations in Cluster C. However, only four mutations are detected in the SNP variants that belong to Cluster C, indicating that Cluster C has a limited proportion of the infected patients in the United States. Our conjecture is confirmed by Table 1. Although 20 states are in-

involved in Cluster C except for NM, fewer samples related to the mutations in Cluster C are found compared to the other three clusters. This means the infectivity-weakening mutations do not rapidly spread across the United States. However, CA and WI have slightly more significant number of samples, indicating that the recent situation in these states is better than the other states.

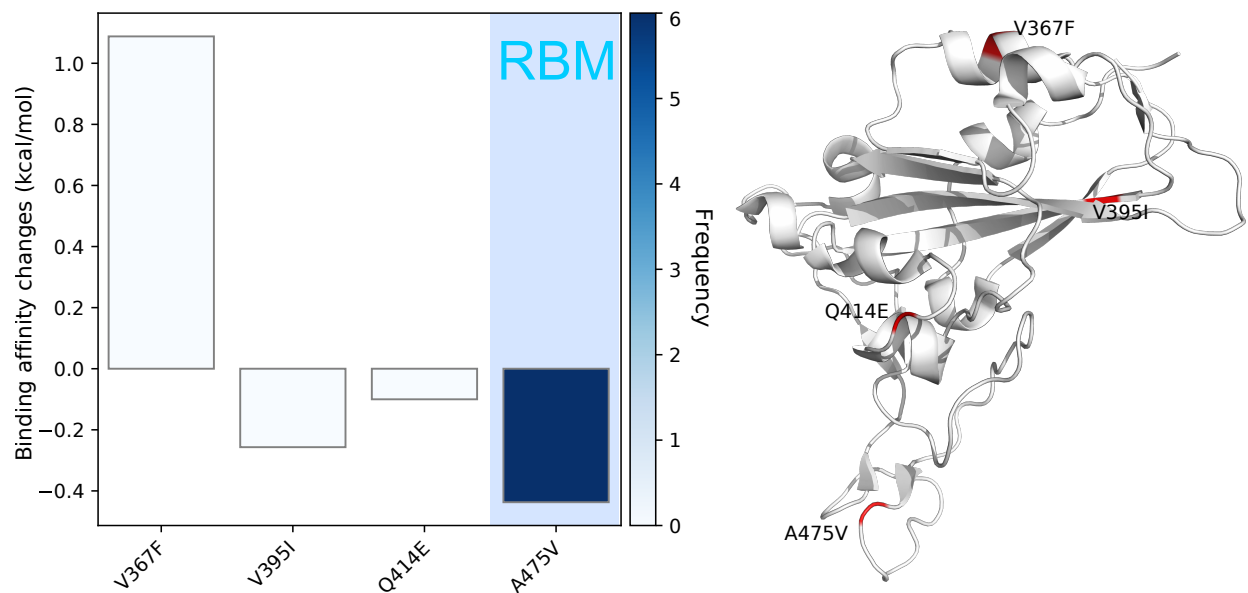


Figure 19: Cluster C. Left: binding affinity changes  $\Delta\Delta G$  (kcal/mol) induced by mutations in Cluster C. Right: mutations on the SARS-CoV-2 S protein RBD.

### 2.3.4 Cluster D infectivity

The binding affinity changes of RDB mutations in Cluster D are illustrated in Figure 20. Eighteen different single mutations are classified in Cluster D. Among them, nine mutations have positive binding affinity changes and relatively higher frequencies, showing that overall the mutations in Cluster D can enhance the transmission capacity of SARS-CoV-2. From Table 1, we can see that R346K, A348T, and N354K have relatively high binding affinity changes. In addition, R403K has the highest frequency among the nine infectivity-strengthen mutations. From Table 1, all of these 20 states have a large proportion in Cluster D, suggesting that the infectivity-strengthen mutations are widely spreading in the United States, especially in CA, MN, NY, WA, and WI.

Finally, since the infectivity-strengthening D614G mutation is associated with all clusters and essentially all the US genome isolates, it may be quite reasonable to say all of the US SARS-CoV-2 substrains become more infectious compared with the original genome collected on December 24, 2019 in China.

## 3 Methods

### 3.1 Data collection and pre-processing

On January 5, 2020, the complete genome sequence of SARS-CoV-2 was first released on the GenBank (Access number: NC\_045512.2) submitted Zhang's group at Fudan University [4]. Since then, there has been a rapid accumulation of SARS-CoV-2 genome sequences. In this work, 24,715 complete genome sequences with high coverage of SARS-CoV-2 strains from the infected individuals in the world were downloaded

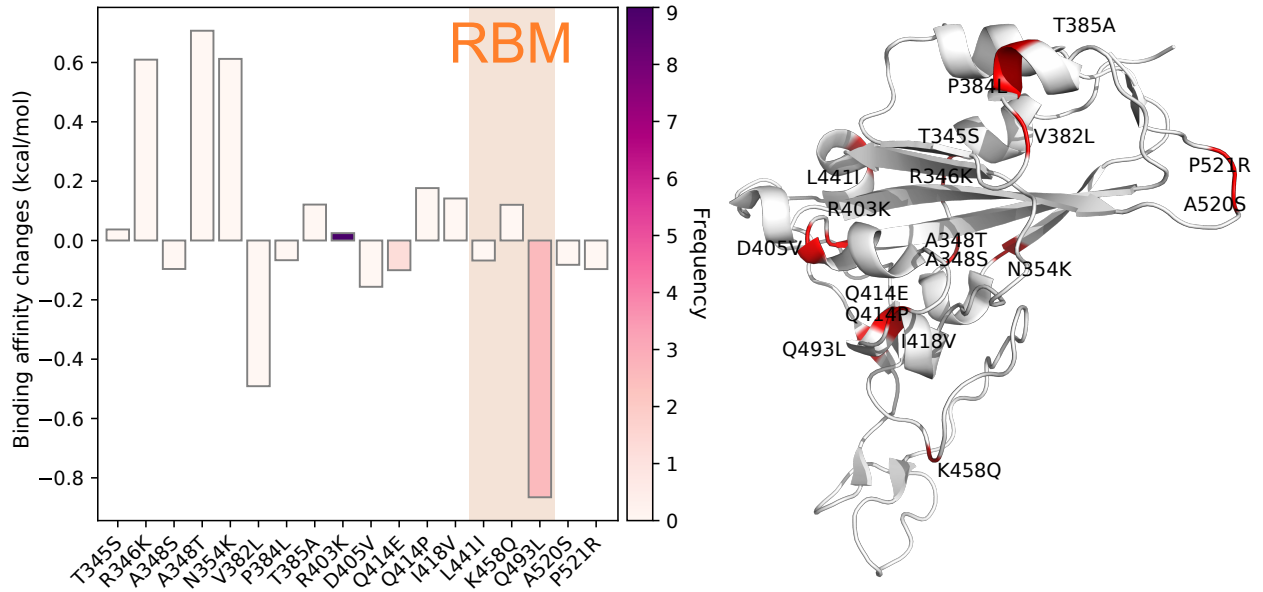


Figure 20: Cluster D. Left: binding affinity changes  $\Delta\Delta G$  (kcal/mol) induced by mutations in Cluster D. Right: mutations on the SARS-CoV-2 S protein RBD.

from the GISAID database [37] (<https://www.gisaid.org/>) as of July 10, 2020. All the incomplete records and those without the exact submission date in GISAID were not considered. To rearrange the complete genome sequences according to the reference SARS-CoV-2 genome, multiple sequence alignment (MSA) is carried out by using Clustal Omega [38] with default parameters.

The amino acid sequence of NSP2, NSP12, NPS13, Spike protein, ORF3a, ORF8 were downloaded from the GenBank [39]. The three-dimensional (3D) structures of NSP12, spike protein, and ORF3a used in this work were extracted from the Protein Data Bank (<https://www.rcsb.org/>), denoted as 7BTF, 6VYB, and 6XDC, respectively. The 3D structures of NSP2, ORF8, and NSP13 were generated by I-TASSER model [40]. The 3D structure graph is created by using PyMOL [19].

### 3.2 Single nucleotide polymorphism genotyping

Single nucleotide polymorphism (SNP) genotyping measures the genetic variations between different members of a species. Establishing the SNP genotyping method to the investigation of the genotype changes during the transmission and evolution of SARS-CoV-2 is of great importance [9, 41]. By analyzing the rearranged genome sequences, SNP profiles, which record all of the SNP positions in teams of the nucleotide changes and their corresponding positions, can be constructed. The SNP profiles of a given SARS-CoV-2 genome isolated from a COVID-19 patient capture all the differences from a complete reference genome sequence and can be considered as the genotype of the individual SARS-CoV-2.

### 3.3 Distance of SNP variants

In this work, we use the Jaccard distance to measure the similarity between SNP variants and compare the difference between the SNP variant profiles of SARS-CoV-2 genomes.

The Jaccard similarity coefficient is defined as the intersection size divided by the union of two sets  $A$  and  $B$  [8]:

$$J(A, B) = \frac{|A \cap B|}{|A \cup B|} = \frac{|A \cap B|}{|A| + |B| - |A \cap B|}. \quad (1)$$

The Jaccard distance of two sets  $A$  and  $B$  is scored as the difference between one and the Jaccard similarity coefficient and is a metric on the collection of all finite sets:

$$d_J(A, B) = 1 - J(A, B) = \frac{|A \cup B| - |A \cap B|}{|A \cup B|}. \quad (2)$$

Therefore, the genetic distance of two genomes corresponds to the Jaccard distance of their SNP variants.

In principle, the Jaccard distance of SNP variants takes account of the ordering of SNP positions, i.e., transmission trajectory, when an appropriate reference sample is selected. However, one may fail to identify the infection pathways from the mutual Jaccard distances of multiple samples. In this case, the dates of the sample collection provide key information. Additionally, clustering techniques, such as  $k$ -means, UMAP, and t-distributed stochastic neighbor embedding (t-SNE), enable us to characterize the spread of COVID-19 onto the communities.

### 3.4 $K$ -means clustering

$K$ -means clustering aims at partitioning a given data set  $X = \{x_1, x_2, \dots, x_n, \dots, x_N\}, x_n \in \mathbb{R}^d$  into  $k$  clusters  $\{C_1, C_2, \dots, C_k\}, k \leq N$  such that the specific clustering criteria are optimized. The standard  $K$ -means clustering algorithm picks  $k$  points as cluster centers randomly at beginning and separates each data to its nearest cluster. Here,  $k$  cluster centers will be updated subsequently by minimizing the within-cluster sum of squares (WCSS):

$$\sum_{i=1}^k \sum_{x_i \in C_k} \|x_i - \mu_k\|_2^2, \quad (3)$$

where  $\mu_k$  is the mean of points locating in the  $k$ -th cluster  $C_k$  and  $n_k$  is the number of points in  $C_k$ . Here,  $\|\cdot\|_2$  denotes the  $L_2$  distance.

The aforementioned algorithm offers an optimal partition of  $k$  clusters. However, it is more important to find the best number of clusters for the given set of SNP variants. Therefore, the Elbow method is employed. A set of WCSS can be calculated in the  $k$ -means clustering process by varying the number of clusters  $k$ , and then plot WCSS according to the number of clusters. The optimal number of clusters will be the elbow in this plot. The WCSS measures the variability of the points within each cluster which is influenced by the number of points  $N$ . Therefore, as the number of total points of  $N$  increases, the value of WCSS becomes larger. Additionally, the performance of  $k$ -means clustering depends on the selection of the specific distance metric.

In this work, we implement  $k$ -means clustering with the Elbow method for analyzing the optimal number of the subtypes of SARS-CoV-2 SNP variants. The Jaccard distance-based representation is considered as the input features for the  $k$ -means clustering method. If we have a total of  $N$  SNP variants concerning a reference genome in a SARS-CoV-2 sample, the location of the mutation sites for each SNP variant will be saved in the set  $S_i, i = 1, 2, \dots, N$ . The Jaccard distance between two different sets (or samples)  $S_i, S_j$  is denoted as  $d_J(S_i, S_j)$ . Therefore, the  $N \times N$  Jaccard distance-based representation is

$$D_J(i, j) = d_J(S_i, S_j). \quad (4)$$

This representation is used in our  $k$ -means clustering.

### 3.5 Topology-based machine learning prediction of protein-protein binding affinity changes following mutations

The topology-based network tree (TopNetTree) model was developed by an innovative integration between the topological representation and network tree (NetTree) to predict the binding affinity changes of protein-protein interaction (PPI) following mutation  $\Delta\Delta G$  [42]. The TopNetTree is applied to predict the binding affinity changes upon mutations that occurred on the RBD of SARS-CoV-2. Algebraic topology [10] is utilized to simplify the structural complexity of protein-protein complexes and embed vital biological information into topological invariants. NetTree integrates the advantages of convolutional neural networks (CNN) and gradient-boosting trees (GBT), such that CNN is treated as an intermediate model that converts vectorized element- and site-specific persistent homology features into a higher-level abstract feature, and GBT uses the upstream features and other biochemistry features for prediction. The performance test of tenfold cross-validation on the dataset (SKEMPI 2.0 [43]) carried out using gradient boosted regression trees (GBRTs). The errors with the SKEMPI2.0 dataset are 0.85 in terms of Pearson correlations coefficient ( $R_p$ ) and 1.11 kcal/mol in terms of the root mean square error (RMSE) [42].

### 3.6 Topology-based machine learning prediction of protein folding stability changes following mutation

In this work, the prediction of protein folding stability changes upon mutation is carried out using a topology-based mutation predictor (TML-MP) (<https://weilab.math.msu.edu/TML/TML-MP/>) which was introduced in literature [11]. The essential biological information is revealed by persistent homology [10]. The machine learning features are generated by the element-specific persistent homology and biochemistry techniques. The dataset includes 2648 mutations cases in 131 proteins provided by Dehouck et al [44] and is trained by a gradient boosted regression trees (GBRTs). The error with the corresponding dataset is given as Pearson correlations coefficient ( $R_p$ ) of 0.79 and root mean square error (RMSE) of 0.91 kcal/mol from previous work [11].

The persistent homology is widely applied in a variety of practical feature generation problems [10]. It is also successful in the implementation of predictions of protein folding stability changes upon mutation [11]. The key idea in TML-MP is using the element-specific persistent homology (ESPH) which distinguishes different element types of biomolecules when building persistent homology barcodes. Commonly occurring protein element types include C, N, O, S, and H, where hydrogen and sulfur are excluded according to that hydrogen atoms are often absent from PDB data and sulfur atoms are too few in most proteins to be statistically important. Thus, C, N, and O elements are considered on the ESPH in protein characterization. Features are extracted from the different dimensions of persistent homology barcodes by dividing barcodes into several equally spaced bins which is called binned barcode representation. The auxiliary features, such as geometry, electrostatics, amino acid type composition, and amino acid sequence, are included for machine learning training as well. In TML-MP, gradient boosted regression trees (GBRTs) [45] are employed to train the dataset according to the size of the training dataset, absence of model overfitting, non-normalization of features, and ability of nonlinear properties [11].

### 3.7 Graph network models

Graph networks can model interactions and their strength between pairs of units in molecules. These approaches are employed to understand mutation-induced structural changes. The biological and chemical properties are measured by comparing descriptors on different networks. In this work, the network consists of a set  $S$  of  $C_\alpha$  atoms from every residue of protein structure except the target mutation residue such that

a  $C_\alpha$  atom is included if it is within 16 Å to any atom of the target mutation. The total atom set  $T$  is defined as the atoms (C, N, and O) of the target residue and  $C_\alpha$  atoms of the network set  $S$ . Moreover, two vertices are connected in the network if their distance is less than 8 Å. Thus the adjacency matrix  $A$  can be defined as well where  $A$  is a matrix containing 0 and 1 such that  $A(i, j) = 0$  if  $i$ -th and  $j$ -th atoms are disconnected and  $A(i, j) = 1$  if  $i$ -th and  $j$ -th atoms are connected. Two graph network models employed in this work are described below.

**Flexibility-rigidity index (FRI)** FRI was introduced to study the flexibility of protein molecules [12, 46]. The single residue molecular rigidity index measures its influence on the set  $S$  which is given as

$$R_\eta^\alpha = \sum_{i=1}^{N_S} \sum_{j=1}^{N_T} e^{-\left(\frac{\|\mathbf{r}_i - \mathbf{r}_j\|}{\eta}\right)^2}, \quad (5)$$

where  $\alpha = w$  or  $m$  stands for the wild type  $w$  or the mutant type  $m$ ,  $N_S$  is the number of  $C_\alpha$  atoms of the set  $S$ , and  $N_T$  is the number of atoms in total atom set  $T$ . Here,  $\|\mathbf{r}_i - \mathbf{r}_j\|$  is the distance between atoms at  $\mathbf{r}_i$  and  $\mathbf{r}_j$ .

#### Average subgraph centrality

Average subgraph centrality is built on the exponential of the adjacency matrix,  $E = e^A$ , where  $A$  is the aforementioned adjacency matrix. The subgraph centrality is the summation of weighted closed walks of all lengths starting and ending at the same node [13, 47]. Thus the average subgraph centrality reveals the average of participating rate of each vertex in all subgraph and the network motif, which is given as

$$\langle C_s^\alpha \rangle = \frac{1}{N_S} \sum_{i=1, i \notin I_T}^N E(i, i), \quad (6)$$

where  $I_T$  is the index set of the mutation residue.

## 4 Conclusion

The prevalence of coronavirus disease 2019 (COVID-19) caused by severe acute respiratory syndrome coronavirus 2 (SARS-CoV-2) in the United States (US) has led to over 4 million infection cases and 145 thousand fatalities as July 22, 2020. Understanding the US SARS-CoV-2 characteristics is of paramount importance to the control of COVID-19 and the reopening of the world's largest economy. We genotype the SARS-CoV-2 genome isolates collected since January 2020 and analyze their cluster distributions, co-mutation patterns, and time evolution traits. We show that the US SARS-CoV-2 has evolved into four substrains. We unveil that the top eight US SARS-CoV-2 mutations are split into two essentially disconnected groups. The first group has 5 concurrent mutations that have prevailed over time, while the other group involving three concurrent mutations is fading out. While five of the top eight US SARS-CoV-2 mutations were initially detected elsewhere namely, China (2), Singapore (2) and the United Kingdom (1), three of them were homegrown. A wide variety of protein-specific analyses, including sequence alignment, folding stability changes following mutations modeled by persistent homology and machine learning, molecular flexibility-rigidity index, and averaged subgraph centrality, are employed to investigate the mutation-induced SARS-CoV-2 property changes. We reveal that the first group is associated with stability enhancing or infectivity strengthening mutations, while the second group involves destabilizing mutations.

We demonstrate that overall, genome samples isolated from female patients show more mutations than those isolated from males. This observation may be due to different strengths of immune response among females and males after the viral infection. We found that one of the top mutations, 27964C>T- (S24L on ORF8), has an unusually strong gender dependence.

Finally, we employ algebraic topology and machine learning to predict spike (S) protein and angiotensin-converting enzyme 2 (ACE2) binding affinity changes after mutations. We show that mutations that strengthen the S protein and ACE2 binding prevail over time. Additionally, three out of four US SARS-CoV-2 sub-strains have become significantly more infectious. Our results indicate the need for strict SARS-CoV-2 control and containment strategies in the US.

## Supporting Information

The supporting information is available for

S1: Supplementary Figures for  $k$ -means clustering and proteoforms

S2: Supplementary Tables for the SNP profiles in the United States and the acknowledgment of GISAID data contributors.

## Acknowledgment

This work was supported in part by NIH grant GM126189, NSF Grants DMS-1721024, DMS-1761320, and IIS1900473, Michigan Economic Development Corporation, George Mason University award PD45722, Bristol-Myers Squibb, and Pfizer. The authors thank The IBM TJ Watson Research Center, The COVID-19 High Performance Computing Consortium, NVIDIA, and MSU HPCC for computational assistance.

## References

- [1] WHO. Coronavirus disease 2019 (COVID-19) situation report 172. *Coronavirus Disease (COVID-2019) Situation Reports*, 2020.
- [2] Marion Sevajol, Lorenzo Subissi, Etienne Decroly, Bruno Canard, and Isabelle Imbert. Insights into RNA synthesis, capping, and proofreading mechanisms of SARS-coronavirus. *Virus Research*, 194:90–99, 2014.
- [3] François Ferron, Lorenzo Subissi, Ana Theresa Silveira De Morais, Nhung Thi Tuyet Le, Marion Sevajol, Laure Gluais, Etienne Decroly, Clemens Vornrhein, Gérard Bricogne, Bruno Canard, et al. Structural and molecular basis of mismatch correction and ribavirin excision from coronavirus RNA. *Proceedings of the National Academy of Sciences*, 115(2):E162–E171, 2018.
- [4] Fan Wu, Su Zhao, Bin Yu, Yan-Mei Chen, Wen Wang, Zhi-Gang Song, Yi Hu, Zhao-Wu Tao, Jun-Hua Tian, Yuan-Yuan Pei, et al. A new coronavirus associated with human respiratory disease in China. *Nature*, 579(7798):265–269, 2020.
- [5] Rui Wang, Yuta Hozumi, Changchuan Yin, and Guo-Wei Wei. Decoding SARS-CoV-2 Transmission and Evolution and Ramifications for COVID-19 Diagnosis, Vaccine, and Medicine. *Journal of Chemical Information and Modeling*, 2020. PMID: 32530284.
- [6] Rafael Sanjuán and Pilar Domingo-Calap. Mechanisms of viral mutation. *Cellular and Molecular Life Sciences*, 73(23):4433–4448, 2016.
- [7] Nathan D Grubaugh, William P Hanage, and Angela L Rasmussen. Making sense of mutation: what D614G means for the COVID-19 pandemic remains unclear. *Cell*, 2020.



- [8] Michael Levandowsky and David Winter. Distance between sets. *Nature*, 234(5323):34–35, 1971.
- [9] Changchuan Yin. Genotyping coronavirus SARS-CoV-2: methods and implications. *Genomics*, 2020.
- [10] Gunnar Carlsson. Topology and data. *Bulletin of the American Mathematical Society*, 46(2):255–308, 2009.
- [11] Zixuan Cang and Guo-Wei Wei. Analysis and prediction of protein folding energy changes upon mutation by element specific persistent homology. *Bioinformatics*, 33(22):3549–3557, 2017.
- [12] Kelin Xia, Kristopher Opron, and Guo-Wei Wei. Multiscale multiphysics and multidomain models- Flexibility and rigidity. *The Journal of Chemical Physics*, 139(19):11B614\_1, 2013.
- [13] Ernesto Estrada. Topological analysis of SARS-CoV-2 main protease. *Chaos: An Interdisciplinary Journal of Nonlinear Science*, 30(6):061102, 2020.
- [14] Markus Hoffmann, Hannah Kleine-Weber, Simon Schroeder, Nadine Krüger, Tanja Herrler, Sandra Erichsen, Tobias S Schiergens, Georg Herrler, Nai-Huei Wu, Andreas Nitsche, et al. SARS-CoV-2 cell entry depends on ACE2 and TMPRSS2 and is blocked by a clinically proven protease inhibitor. *Cell*, 2020.
- [15] Nelson Lee, David Hui, Alan Wu, Paul Chan, Peter Cameron, Gavin M Joynt, Anil Ahuja, Man Yee Yung, CB Leung, KF To, et al. A major outbreak of severe acute respiratory syndrome in Hong Kong. *New England Journal of Medicine*, 348(20):1986–1994, 2003.
- [16] Peng Zhou, Xing-Lou Yang, Xian-Guang Wang, Ben Hu, Lei Zhang, Wei Zhang, Hao-Rui Si, Yan Zhu, Bei Li, Chao-Lin Huang, et al. A pneumonia outbreak associated with a new coronavirus of probable bat origin. *Nature*, 579(7798):270–273, 2020.
- [17] Dan Hu, Changqiang Zhu, Lele Ai, Ting He, Yi Wang, Fuqiang Ye, Lu Yang, Chenxi Ding, Xuhui Zhu, Ruicheng Lv, et al. Genomic characterization and infectivity of a novel SARS-like coronavirus in Chinese bats. *Emerging microbes & infections*, 7(1):1–10, 2018.
- [18] Jan Felix Drexler, Florian Gloza-Rausch, Jörg Glende, Victor Max Corman, Doreen Muth, Matthias Goettsche, Antje Seebens, Matthias Niedrig, Susanne Pfefferle, Stoian Yordanov, et al. Genomic characterization of severe acute respiratory syndrome-related coronavirus in European bats and classification of coronaviruses based on partial RNA-dependent RNA polymerase gene sequences. *Journal of virology*, 84(21):11336–11349, 2010.
- [19] Warren L DeLano et al. Pymol: An open-source molecular graphics tool. *CCP4 Newsletter on Protein Crystallography*, 40(1):82–92, 2002.
- [20] Maria Pachetti, Bruna Marini, Francesca Benedetti, Fabiola Giudici, Elisabetta Mauro, Paola Storici, Claudio Masciovecchio, Silvia Angeletti, Massimo Ciccozzi, Robert C Gallo, et al. Emerging SARS-CoV-2 mutation hot spots include a novel RNA-dependent-RNA polymerase variant. *Journal of Translational Medicine*, 18:1–9, 2020.
- [21] Yan Gao, Liming Yan, Yucen Huang, Fengjiang Liu, Yao Zhao, Lin Cao, Tao Wang, Qianqian Sun, Zhenhua Ming, Lianqi Zhang, et al. Structure of the RNA-dependent RNA polymerase from COVID-19 virus. *Science*, 368(6492):779–782, 2020.
- [22] B Korber, WM Fischer, S Gnanakaran, H Yoon, J Theiler, W Abfalterer, N Hengartner, EE Giorgi, T Bhat-tacharya, B Foley, et al. Tracking changes in SARS-CoV-2 Spike: evidence that D614G increases infectivity of the COVID-19 virus. *Cell*, 2020.
- [23] Jun Lan, Jiwan Ge, Jinfang Yu, Sisi Shan, Huan Zhou, Shilong Fan, Qi Zhang, Xuanling Shi, Qisheng Wang, Linqi Zhang, et al. Structure of the SARS-CoV-2 spike receptor-binding domain bound to the ACE2 receptor. *Nature*, 581(7807):215–220, 2020.

- [24] Ulrich Omasits, Christian H Ahrens, Sebastian Müller, and Bernd Wollscheid. Protter: interactive protein feature visualization and integration with experimental proteomic data. *Bioinformatics*, 30(6):884–886, 2014.
- [25] Yujie Ren, Ting Shu, Di Wu, Jingfang Mu, Chong Wang, Muhan Huang, Yang Han, Xue-Yi Zhang, Wei Zhou, Yang Qiu, et al. The ORF3a protein of SARS-CoV-2 induces apoptosis in cells. *Cellular & Molecular Immunology*, pages 1–3, 2020.
- [26] Sk Sarif Hassan, Pabitra Pal Choudhury, Pallab Basu, and Siddhartha Sankar Jana. Molecular conservation and Differential mutation on ORF3a gene in Indian SARS-CoV2 genomes. *Genomics*, 2020.
- [27] Adnan Shah. Novel Coronavirus-Induced NLRP3 Inflammasome Activation: A Potential Drug Target in the Treatment of COVID-19. *Frontiers in Immunology*, 11, 2020.
- [28] Cromwell T Cornillez-Ty, Lujian Liao, John R Yates, Peter Kuhn, and Michael J Buchmeier. Severe acute respiratory syndrome coronavirus nonstructural protein 2 interacts with a host protein complex involved in mitochondrial biogenesis and intracellular signaling. *Journal of Virology*, 83(19):10314–10318, 2009.
- [29] Adeyemi O Adediji, Bruno Marchand, Aartjan JW Te Velthuis, Eric J Snijder, Susan Weiss, Robert L Eoff, Kamalendra Singh, and Stefan G Sarafianos. Mechanism of nucleic acid unwinding by SARS-CoV helicase. *PloS One*, 7(5):e36521, 2012.
- [30] Chun-Kit Yuen, Joy-Yan Lam, Wan-Man Wong, Long-Fung Mak, Xiaohui Wang, Hin Chu, Jian-Piao Cai, Dong-Yan Jin, Kelvin Kai-Wang To, Jasper Fuk-Woo Chan, et al. SARS-CoV-2 nsp13, nsp14, nsp15 and orf6 function as potent interferon antagonists. *Emerging Microbes & Infections*, pages 1–29, 2020.
- [31] Kèvin Knoops, Marjolein Kikkert, Sjoerd HE Van Den Worm, Jessika C Zevenhoven-Dobbe, Yvonne Van Der Meer, Abraham J Koster, A Mieke Mommaas, and Eric J Snijder. SARS-coronavirus replication is supported by a reticulovesicular network of modified endoplasmic reticulum. *PLoS Biol*, 6(9):e226, 2008.
- [32] Yiwen Zhang, Junsong Zhang, Yingshi Chen, Baohong Luo, Yaochang Yuan, Feng Huang, Tao Yang, Fei Yu, Jun Liu, Bingfeng Liu, et al. The ORF8 Protein of SARS-CoV-2 Mediates Immune Evasion through Potently Downregulating MHC-I. *bioRxiv*, 2020.
- [33] Ling Ni, Fang Ye, Meng-Li Cheng, Yu Feng, Yong-Qiang Deng, Hui Zhao, Peng Wei, Jiwan Ge, Mengting Gou, Xiaoli Li, et al. Detection of SARS-CoV-2-specific humoral and cellular immunity in COVID-19 convalescent individuals. *Immunity*, 2020.
- [34] Jiahui Chen, Rui Wang, Menglun Wang, and Guo-Wei Wei. Mutations strengthened SARS-CoV-2 infectivity. *Journal of Molecular Biology*, <https://doi.org/10.1016/j.jmb.2020.07.009>, 2020.
- [35] Bette Korber, Will Fischer, S Gnana Gnanakaran, Heyjin Yoon, James Theiler, Werner Abfalterer, Brian Foley, Elena E Giorgi, Tanmoy Bhattacharya, Matthew D Parker, et al. Spike mutation pipeline reveals the emergence of a more transmissible form of SARS-CoV-2. *bioRxiv*, 2020.
- [36] Lizhou Zhang, Cody B Jackson, Huihui Mou, Amrita Ojha, Erumbi S Rangarajan, Tina Izard, Michael Farzan, and Hyeryunc Choe. The D614G mutation in the SARS-CoV-2 spike protein reduces S1 shedding and increases infectivity. *bioRxiv*, 2020.
- [37] Yuelong Shu and John McCauley. GISAID: Global initiative on sharing all influenza data—from vision to reality. *Eurosurveillance*, 22(13), 2017.
- [38] Fabian Sievers and Desmond G Higgins. Clustal omega. *Current Protocols in Bioinformatics*, 48(1):3–13, 2014.

- [39] Dennis A Benson, Ilene Karsch-Mizrachi, David J Lipman, James Ostell, and Eric W Sayers. GenBank. *Nucleic acids research*, 37(suppl\_1):D26–D31, 2009.
- [40] Jianyi Yang, Renxiang Yan, Ambrish Roy, Dong Xu, Jonathan Poisson, and Yang Zhang. The I-TASSER Suite: protein structure and function prediction. *Nature methods*, 12(1):7–8, 2015.
- [41] Rui Wang, Yuta Hozumi, Changchuan Yin, and Guo-Wei Wei. Decoding asymptomatic COVID-19 infection and transmission. *arXiv preprint arXiv:2007.01344*, 2020.
- [42] Menglun Wang, Zixuan Cang, and Guo-Wei Wei. A topology-based network tree for the prediction of protein–protein binding affinity changes following mutation. *Nature Machine Intelligence*, 2(2):116–123, 2020.
- [43] Justina Jankauskaitė, Brian Jiménez-García, Justas Dapkūnas, Juan Fernández-Recio, and Iain H Moal. SKEMPI 2.0: an updated benchmark of changes in protein–protein binding energy, kinetics and thermodynamics upon mutation. *Bioinformatics*, 35(3):462–469, 2019.
- [44] Yves Dehouck, Aline Grosfils, Benjamin Folch, Dimitri Gilis, Philippe Bogaerts, and Marianne Rooman. Fast and accurate predictions of protein stability changes upon mutations using statistical potentials and neural networks: PoPMuSiC-2.0. *Bioinformatics*, 25(19):2537–2543, 2009.
- [45] Jerome H Friedman. Greedy function approximation: a gradient boosting machine. *Annals of statistics*, pages 1189–1232, 2001.
- [46] Duc Duy Nguyen, Kelin Xia, and Guo-Wei Wei. Generalized flexibility-rigidity index. *The Journal of Chemical Physics*, 144(23):234106, 2016.
- [47] Ernesto Estrada and Juan A Rodriguez-Velazquez. Subgraph centrality in complex networks. *Physical Review E*, 71(5):056103, 2005.