

$$1. \frac{x+3}{x^2+4x+3} = \frac{x+3}{(x+3)(x+1)} = \frac{1}{x+1} \rightarrow \frac{1}{-3+1} = -\frac{1}{2} \text{ as } x \rightarrow -3$$

2. By long division

$$\begin{array}{r}
 v^2 \quad +2v \quad +4 \\
 v-2 \overline{) v^3 -8} \\
 \underline{v^3 -2v^2} \\
 2v^2 \\
 \underline{2v^2 -4v} \\
 4v \\
 \underline{4v } \\
 0
 \end{array}$$

$$\frac{v^3-8}{v-2} = v^2+2v+4 \quad \text{so } v^3-8 = (v-2)(v^2+2v+4).$$

$$\begin{aligned}
 \frac{v^3-8}{v^4-16} &= \frac{(v-2)(v^2+2v+4)}{(v^2-4)(v^2+4)} = \frac{(v-2)(v^2+2v+4)}{(v-2)(v+2)(v^2+4)} \\
 &= \frac{(v^2+2v+4)}{(v+2)(v^2+4)} \rightarrow \frac{12}{4 \cdot 8} = \frac{3}{8} \text{ as } x \rightarrow 2.
 \end{aligned}$$

3. As $x \rightarrow 0^-$, $x^{5/3}$ is small, negative. $\therefore \frac{1}{x^{5/3}} \rightarrow -\infty$ as $x \rightarrow 0^-$

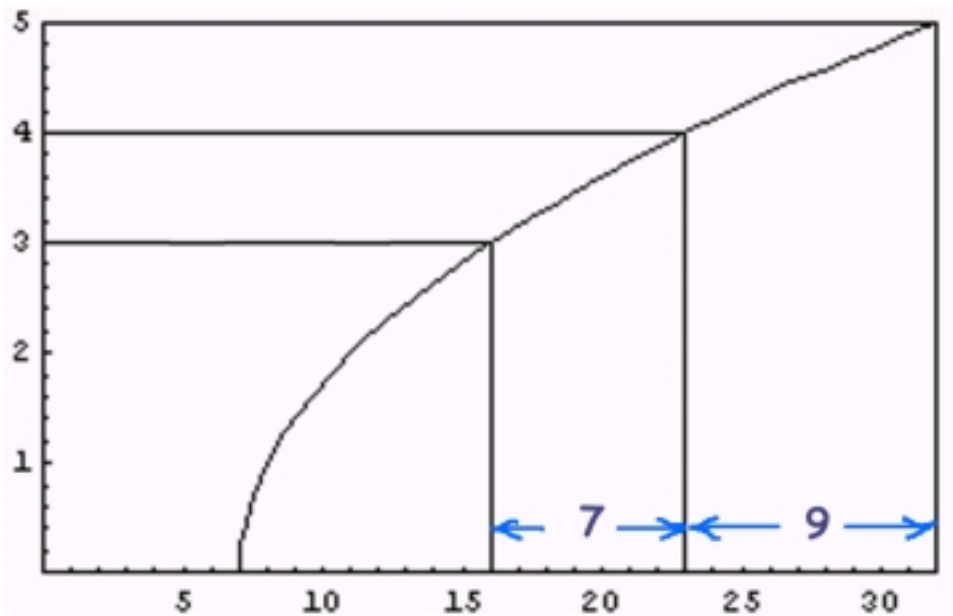
4. $\sqrt{x_1 - 7} = 3$, $x_1 - 7 = 9$, $x_1 = 16$.

$\sqrt{x_2 - 7} = 5$, $x_2 - 7 = 25$, $x_2 = 32$.

If the distance between x and 23 is less than 9 and if x is to the right of 23 then $|f(x) - L| < 1$.

If the distance between x and 23 is less than 7 and if x is to the left of 23 then $|f(x) - L| < 1$.

We need to choose δ so that if $|x - 23| < \delta$ then $|f(x) - L| < 1$. Since x can be to the right or left of 23, we need to choose the smaller of the two numbers 7 and 9. \therefore Let $\delta = 7$.



5. $f(x) = x^5 + x - 3$, $f(0) = -3$, $f(2) = 31$. \therefore there exists c between 0 and 2 with $f(c) = 0$ by the Intermediate Value Property, since 0 is between -3 and 31 .

$$6. \frac{f(x+h) - f(x)}{h} = \frac{\sqrt{x+h+1} - \sqrt{x+1}}{h} = \frac{(\sqrt{x+h+1} - \sqrt{x+1}) \cdot (\sqrt{x+h+1} + \sqrt{x+1})}{h(\sqrt{x+h+1} + \sqrt{x+1})}$$

$$= \frac{x+h+1 - (x+1)}{h(\sqrt{x+h+1} + \sqrt{x+1})} = \frac{1}{\sqrt{x+h+1} + \sqrt{x+1}} \rightarrow \frac{1}{2\sqrt{x+1}} \text{ as } h \rightarrow 0$$

So at $x = 9$, $m = \frac{1}{2\sqrt{10}} = \frac{\sqrt{10}}{20}$.

$$7. \frac{d}{dx} \left(\frac{x^2 - 1}{x^2 + 1} \right) = \frac{(x^2 + 1)2x - (x^2 - 1)(2x)}{(x^2 + 1)^2} = \frac{2x((x^2 + 1) - (x^2 - 1))}{(x^2 + 1)^2} = \frac{4x}{(x^2 + 1)^2}$$

$$8. y = x^2 + x^{-2}, \quad y' = 2x - 2x^{-3}, \quad y'' = 2 + 6x^{-4}.$$

$$9. y = \frac{(x^2 + x)(x^2 - x + 1)}{x^4} = \frac{x^4 - x^3 + x^2 + x^3 - x^2 + x}{x^4} = \frac{x^4 + x}{x^4} = 1 + x^{-3}$$
$$y' = -3x^{-4}, \quad y'' = 12x^{-5}.$$

$$10. s = -16t^2 + 160t, \quad v = \frac{ds}{dt} = -32t + 160 = 0 \text{ when } t = \frac{160}{32} = 5. \text{ At that time } s = -16 \cdot 5^2 + 160 \cdot 5 = 400.$$